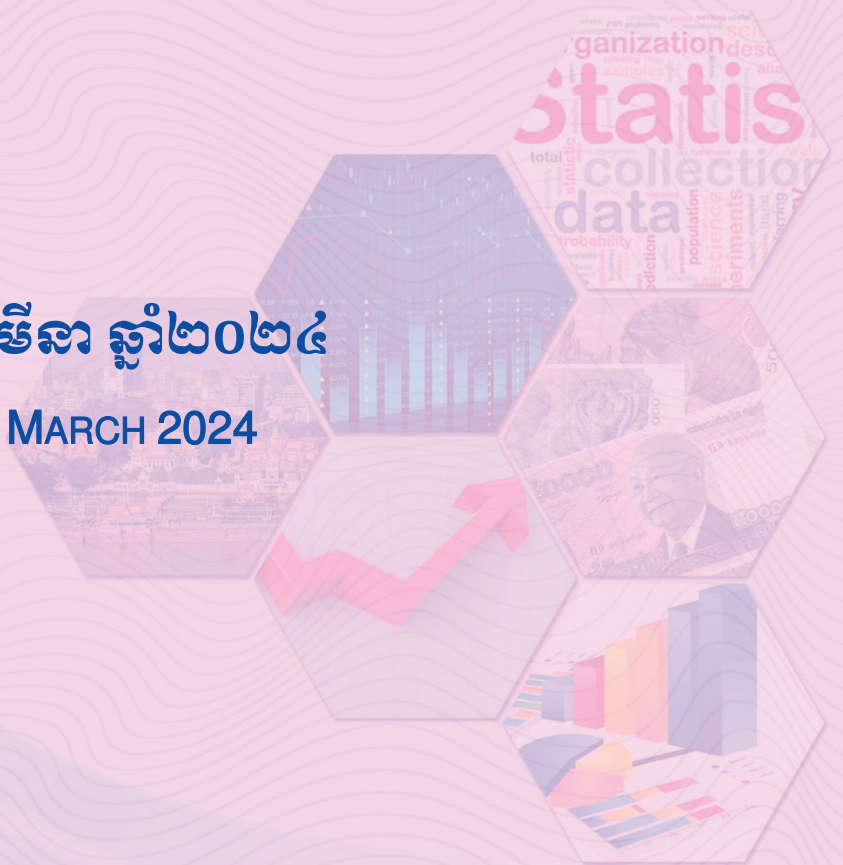




ធនាគារជាតិ នៃ កម្ពុជា
NATIONAL BANK OF CAMBODIA

ព្រឹត្តិបត្រស្ថិតិសេដ្ឋកិច្ច និងរូបិយវត្ថុ **Economic and Monetary Statistics Bulletin**

ខែមីនា ឆ្នាំ២០២៤
MARCH 2024



លេខ៣៦៥- ឆ្នាំទី៣២

SERIES No. 365- 32ND YEAR

Contents

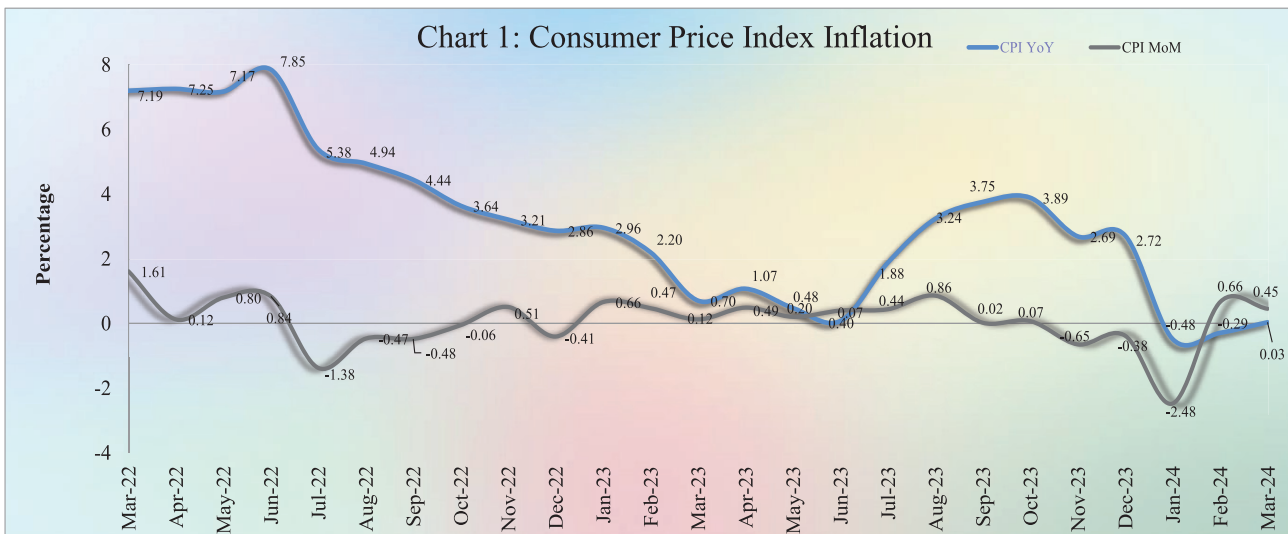
	Page
- Introduction.....	1
- Exchange Rate.....	1
- Money Supply	1
- Net Domestic Assets of the Depository Corporations.....	2
- Net Foreign Assets of the Depository Corporations	2
- Other Depository Corporations Survey.....	3
- Other Financial Corporations Survey.....	3
- Interest Rates on Loans and Deposits	3
- Foreign Tourist Arrivals.....	4
- International Trade in Goods	4
Table 1 : Consumer Price Index and Inflation Rate.....	6
Table 2 : Consumer Items Showing Price Increased in March 2024	7
Table 3 : Gross Domestic Product	8
Chart 1 : GDP by Economic Activity (At Constant 2000 Prices).....	8
Chart 2 : GDP by Economic Activity (At Current Prices).....	8
Table 4 : Residential Property Price Index	9
Chart 3 : RPPI Month on Month Change	9
Chart 4 : RPPI Year on Year Change	9
Table 5 : Approved Investment Projects by Sectors	10
Chart 5 : Investment Fixed Assets by Sectors	10
Chart 6 : Numbers of Investment Projects by Sectors	10
Table 6 : Approved Investment Projects by Major Countries.....	11
Table 7 : Daily Exchange Rate in March 2024 (KHR/USD).....	12
Table 8 : Monthly Exchange Rate (KHR/USD, End-Period)	13
Chart 7 : Trend of Monthly Exchange Rate.....	13
Table 9 : The Value of KHR Against Other Currencies (Official Buying Rates, End-Period)	14
Table 10: Deposit Money Bank's Interest Rates on Deposits and Loans in KHR.....	15
Table 11: Central Bank Survey.....	16
Table 12: Other Depository Corporations Survey	17
Table 13: Depository Corporations Survey	18
Table 14: Other Financial Corporations Survey	19
Table 15: Financial Corporations Survey	20
Chart 8 : Financial Corporations Survey	21
Chart 9 : Monetary Aggregates Components.....	21
Table 16: Credit Granted by Deposit Money Banks Classified by Industry.....	22
Chart 10: Credit Granted by Deposit Money Banks Classified by Industry.....	22
Table 17: Monthly Change of Credit Granted by Deposit Money Banks Classified by Industry.....	23
Table 18: Deposits with Deposit Money Banks.....	24
Chart 11: Deposits with Deposit Money Banks Classified by Currency, as of March 2024 (% of Total Deposits)	24
Table 19: Monthly Change of Deposits with Deposit Money Banks	25
Chart 12: Deposits in KHR Classified by Type, as of March 2024 (% of Total KHR Deposits).....	26
Chart 13: Deposits in Foreign Currency Classified by Type, as of March 2024 (% of Total FCD).....	26
Table 20: Credit Granted by Micro-Finance Institutions and Non-Government Organizations.....	27
Table 21: KHR-Denominated Checks Clearing Through Clearing House	28
Table 22: USD-Denominated Checks Clearing Through Clearing House	29
Table 23: Visitor Arrivals in Cambodia.....	30
Table 24: Cambodia's Imports and Exports	31
Table 25: The Banking System in Cambodia	32-33

Introduction

Headline consumer price inflation in March 2024 decelerated over the previous month, and the Khmer riel (KHR) appreciated against US dollar. During this period, residents' deposits in the banking sector continued to increase, while credit to private sector decreased slightly. In the meantime, international trade in goods showed an increase in deficit.

Consumer Price Index

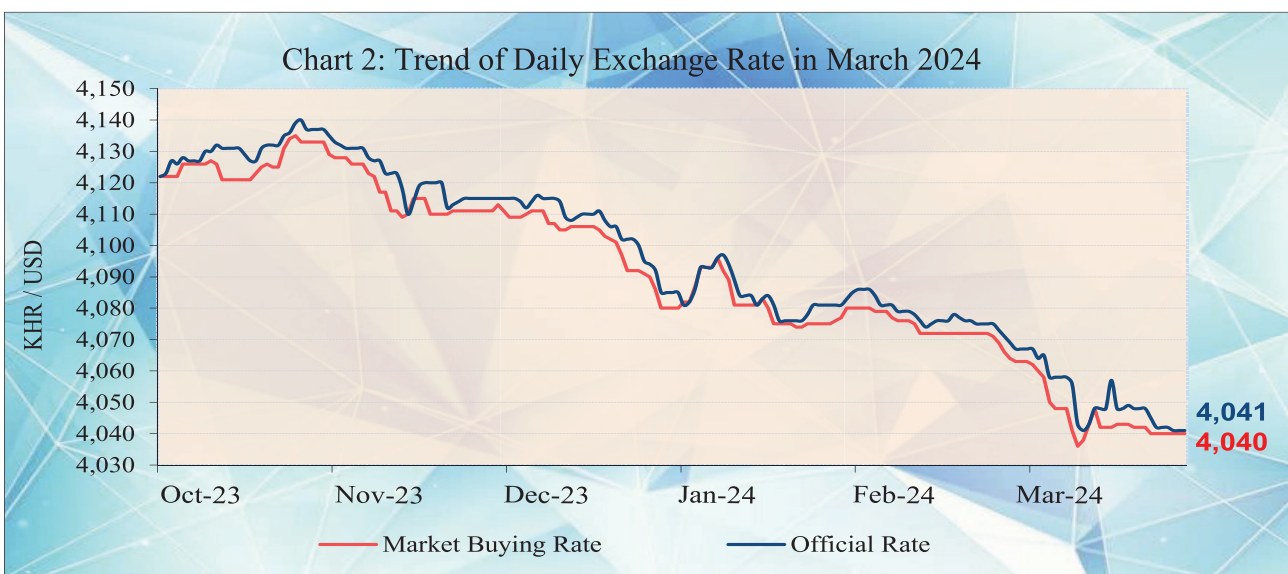
The consumer price inflation in Phnom Penh (month-on-month) eased to 0.45% in March 2024 from 0.66% in February, in which two out of twelve group indexes decreased, and the other ten group indexes increased.



During the same period, the year-on-year percentage change of the CPI for all items accelerated to 0.03% from the negative level of -0.3% in February, which was mainly due to the increase in oil and food prices.

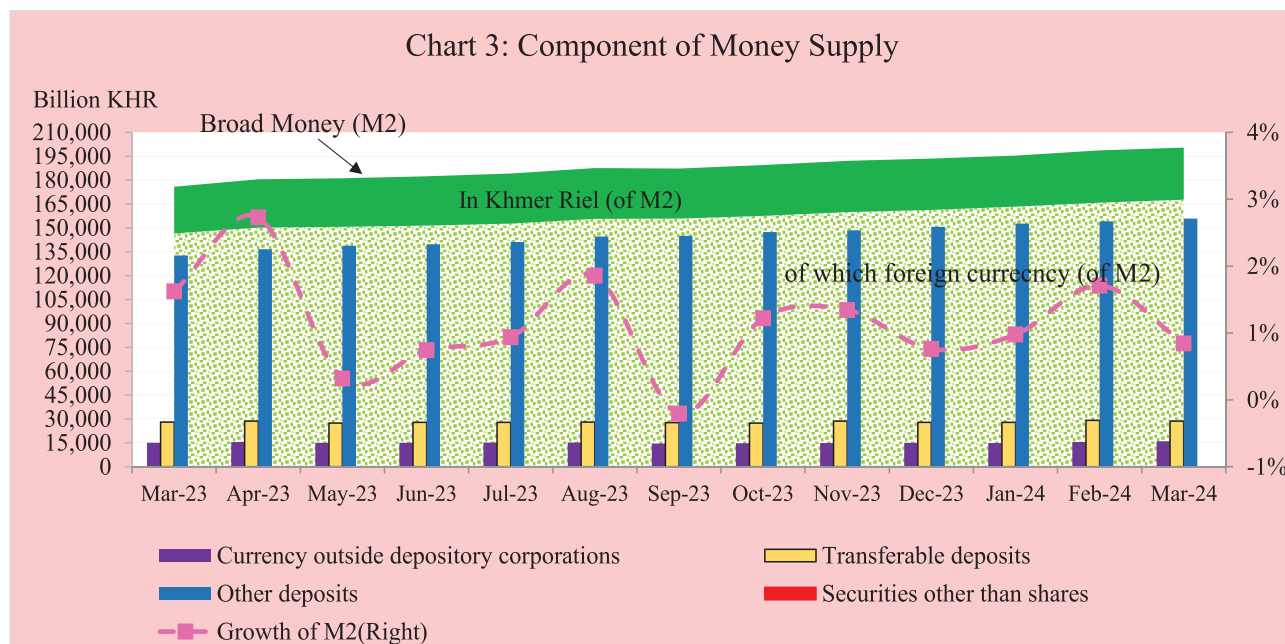
Exchange Rate

The exchange rate (market buying rate) was KHR 4,040 per USD in March 2024, appreciated by 0.59% over February.



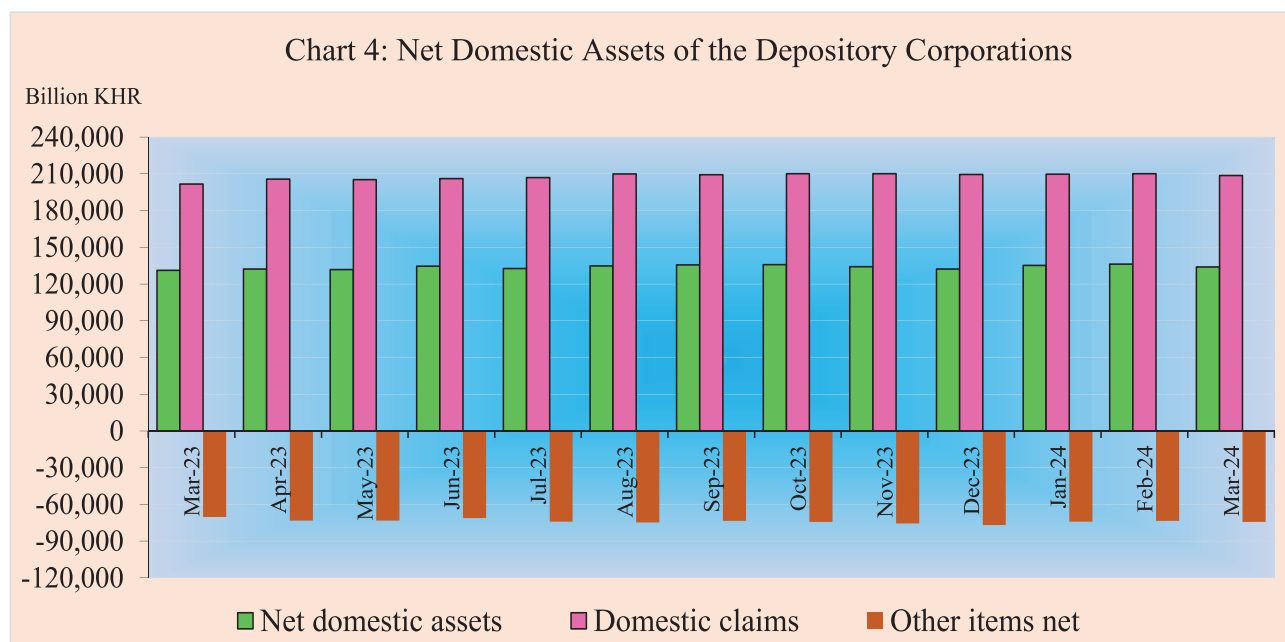
Money Supply

Broad money (M2) increased to KHR 200,437.9 billion in March 2024, up by 0.8% compared to February. The main components of M2 showed that currency outside depository corporations, and other deposits increased by 3.9%, and 1.1%, respectively, while transferable deposits declined by 1.9%.



Net Domestic Assets of the Depository Corporations

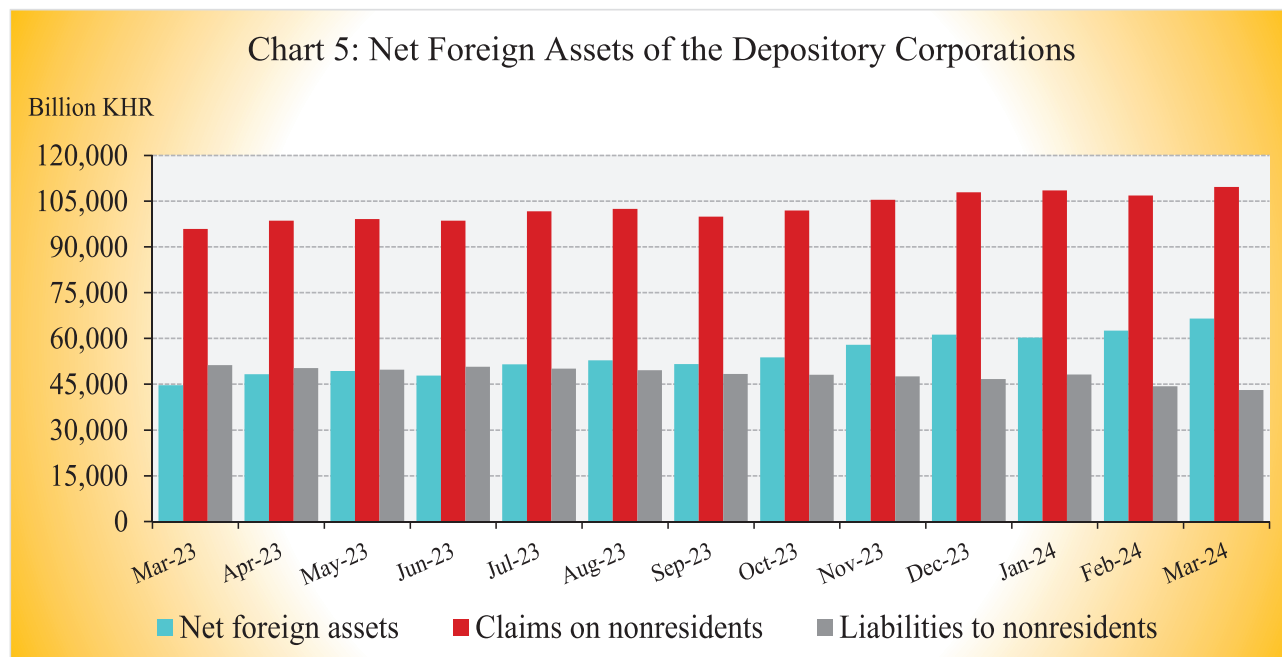
Net domestic assets of the depository corporations decreased to KHR 133,887.8 billion in March 2024, down by 1.7% compared to February. This was due to the decrease of 1.2% and 0.7% in other items net and net domestic credit, respectively.



The decrease in other items net was due to a decrease of 3.1% in others along with an increase of 0.9% in capital accounts. The decrease in net domestic credit was due to the decreases of 4.8%, 2.3%, and 0.2% in net credit to nonfinancial public sector, net credit to other financial corporations, and credit to private sector, respectively.

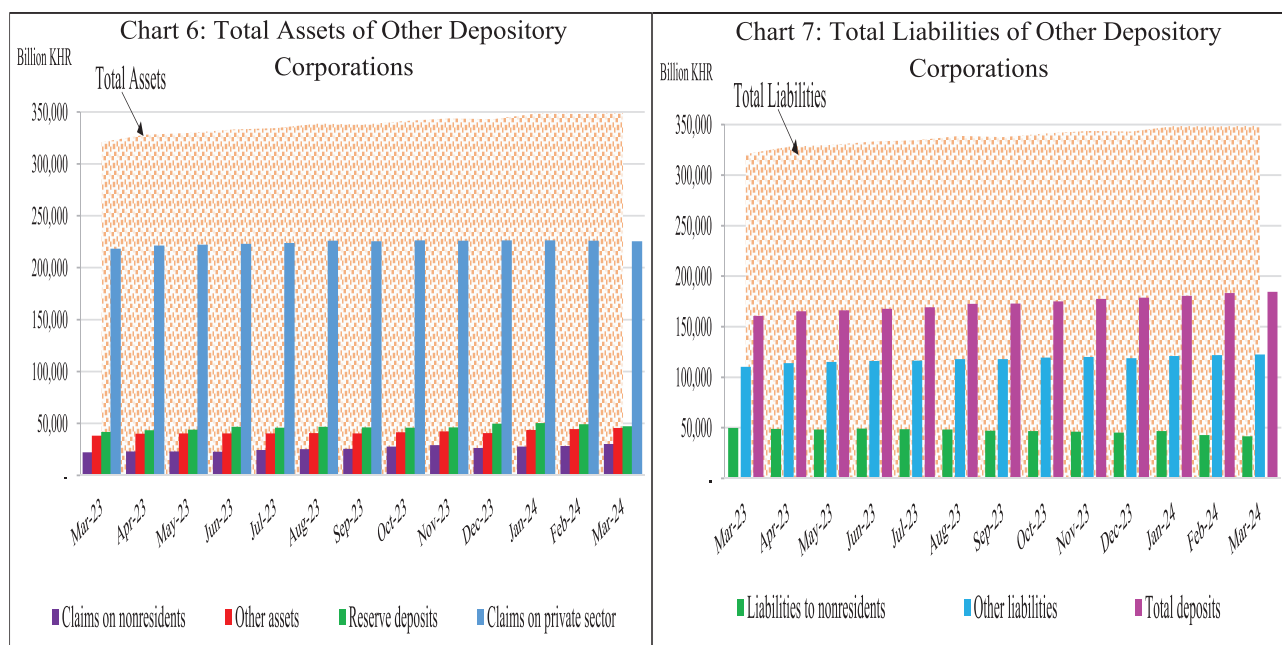
Net Foreign Assets of the Depository Corporations

Net foreign assets of the depository corporation increased to KHR 66,550.1 billion in March 2024, up by 6.4% from February. This was due to the increase of 6.9% and 1.1% in other foreign assets and gross foreign reserve, respectively, along with a decrease of 2.7% in foreign liabilities.



Other Depository Corporations Survey

Total assets of other depository corporations (including commercial banks and microfinance deposit-taking institutions) were KHR 348,813.1 billion, up by 0.1% in March 2024 compared to the previous month.



Other Financial Corporations Survey

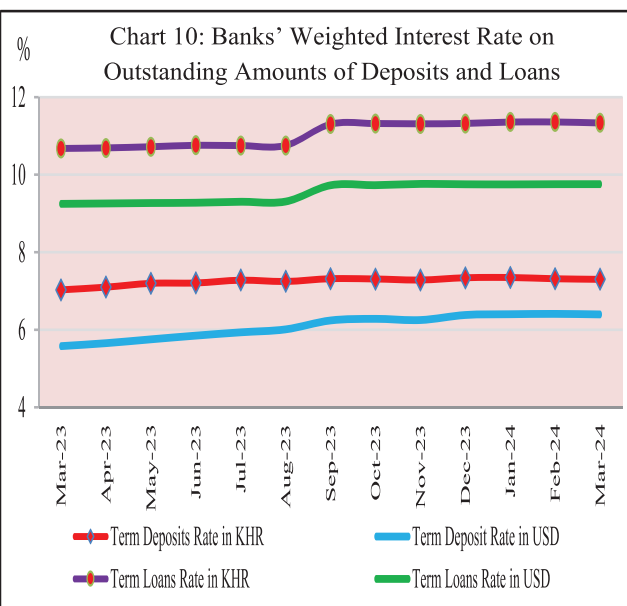
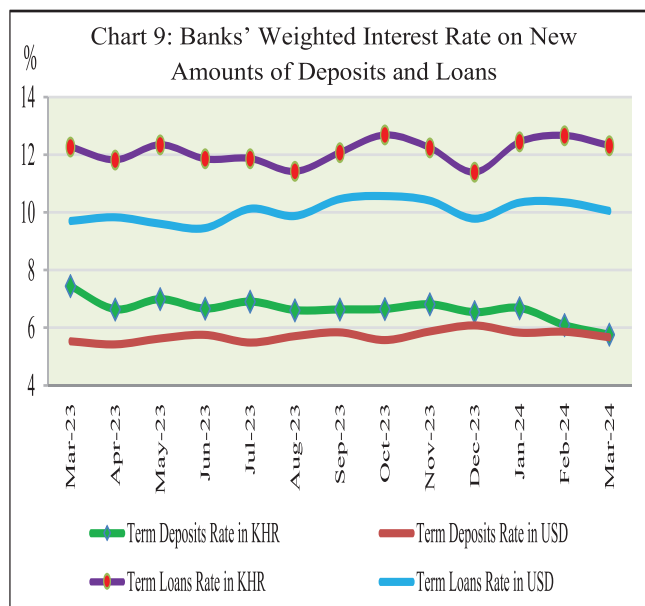
Total assets of other financial corporations (including specialized banks, MFIs, and insurance companies) were KHR 16,670.4 billion, up by 9.2% in March 2024 compared to February.

Chart 8: Total Assets of Other Financial Corporations



Interest Rates on Deposits and Loans

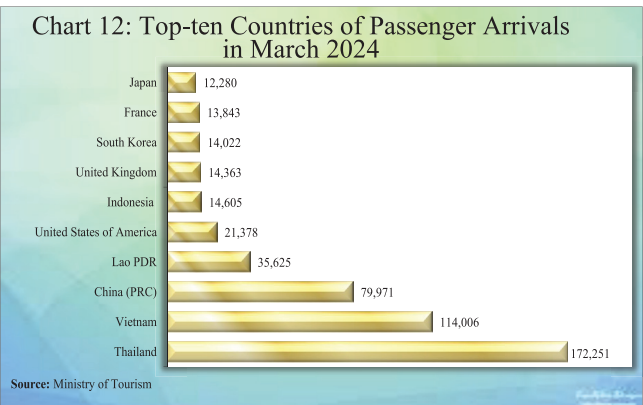
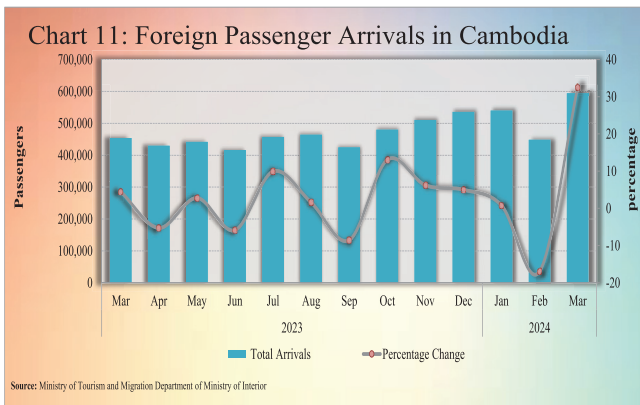
Interest rate on deposits and loans of banking sector in March 2024 showed that the (new amount) weighted average interest rate on term deposits in KHR decreased by 0.33% to 5.76%, and term deposits in USD decreased by 0.19% to 5.67%. At the same time, the weighted average interest rate on term loans in KHR decreased by 0.35% to 12.32%, and term loans in USD decreased by 0.3% to 10.05%.



Foreign Tourist Arrivals

In March 2024, the total number of passenger arrivals was 594,103, increased by 32.4% after the decrease of 16.9% in the previous month. The main purposes of the passenger arrivals in Cambodia were for vacation, and business and professional, which were accounted for 76.4% and 21.8% of the total, respectively.

Most of the foreign passengers were from Thailand, Vietnam, China P.R.C., Laos PDR, United States of America, Indonesia, United Kingdom, South Korea, France, and Japan.



International Trade in Goods

International trade in goods showed a deficit of KHR 714.2 billion (8.3%) in March 2024, following the deficit of KHR 245.3 billion (2.9%) in February.



The major components of total exports were Garment, Fish and other agricultural Products, Other Textile Product, Footwear, Electrical Part, Rice, Wood Products, Bicycle, Rubber, and Vehicle and Bicycle Part. In addition, the major components of total imports were Fabric, Oil, Vehicle, Food and Beverage, Equipment Construction, Garment, Steel, Other Electronic Equipment, Medicine, Cigarette, Fertilizer, and Gold.

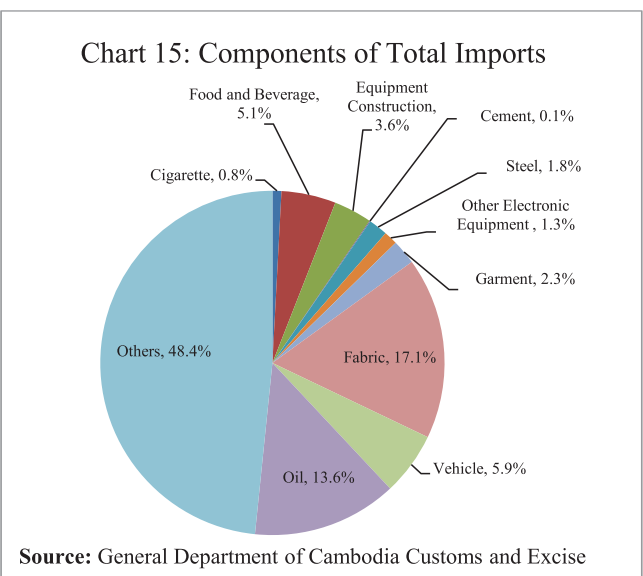
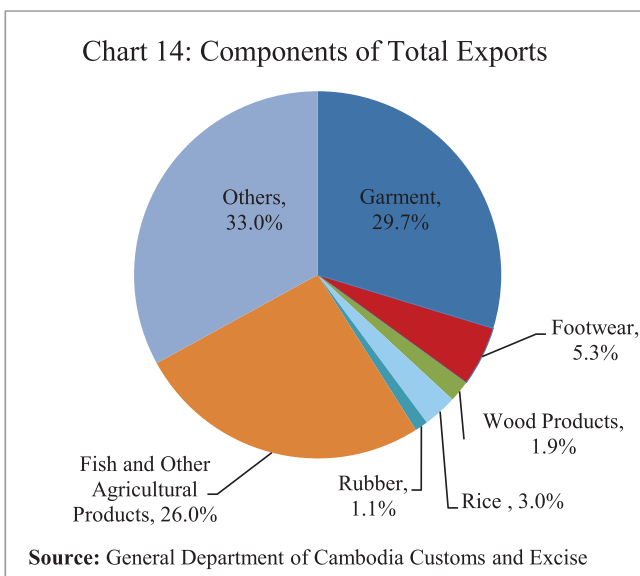


Table 1: Consumer Price Index and Inflation Rate

1. Consumer Price Index (CPI) and Component Indices (Oct-Dec. 2006 = 100)	Nov-23	Dec-23	Jan-24	Feb-24	Mar-24
CPI (all items)	203.62	202.84	197.82	199.12	200.03
Food and Non-Alcoholic Beverages	254.67	253.09	245.69	246.85	248.56
Alcoholic Beverages, Tobacco and Narcotics	186.20	186.53	179.91	180.26	180.48
Clothing and Footwear	183.17	183.05	177.44	178.42	180.05
Housing, Water, Electricity, Gas and other Fuels	141.85	141.60	138.63	139.31	139.70
Furnishings and Household Maintenance	163.65	163.67	161.85	162.09	162.50
Health	142.92	142.38	141.79	142.17	142.57
Transport	124.80	125.64	123.66	126.61	126.42
Communication	66.63	66.58	66.34	66.41	66.41
Recreation and Culture	133.09	132.90	128.93	129.72	130.47
Education	172.29	173.52	171.62	172.29	173.66
Restaurants	325.77	323.88	317.22	320.58	319.90
Miscellaneous Goods and Services	171.73	171.89	168.69	169.29	169.79
2. Percentage Change in the CPI and its Components					
2.1 Month on Month Change (%)					
CPI (all items)	-0.65	-0.38	-2.48	0.66	0.45
Food and Non-Alcoholic Beverages	-0.60	-0.62	-2.92	0.47	0.69
Alcoholic Beverages, Tobacco and Narcotics	0.02	0.18	-3.55	0.19	0.12
Clothing and Footwear	-0.34	-0.06	-3.07	0.55	0.92
Housing, Water, Electricity, Gas and other Fuels	-0.37	-0.17	-2.10	0.49	0.28
Furnishings and Household Maintenance	-0.10	0.01	-1.11	0.15	0.25
Health	-0.49	-0.38	-0.41	0.27	0.28
Transport	-1.79	0.68	-1.58	2.39	-0.15
Communication	-0.08	-0.07	-0.37	0.12	0.00
Recreation and Culture	-0.30	-0.14	-2.99	0.61	0.58
Education	0.00	0.71	-1.10	0.39	0.79
Restaurants	-1.06	-0.58	-2.06	1.06	-0.21
Miscellaneous Goods and Services	-0.03	0.09	-1.86	0.35	0.30
2.2 Year on Year Change (%)					
CPI (all items)	2.69	2.72	-0.48	-0.29	0.03
Food and Non-Alcoholic Beverages	3.55	3.08	-0.37	-0.28	0.01
Alcoholic Beverages, Tobacco and Narcotics	3.74	3.69	-0.17	-0.11	-0.17
Clothing and Footwear	3.11	3.59	0.23	0.51	1.16
Housing, Water, Electricity, Gas and other Fuels	2.21	2.24	-0.21	-0.08	0.32
Furnishings and Household Maintenance	1.42	1.39	0.06	0.10	0.22
Health	-0.52	0.43	-0.11	0.02	0.25
Transport	-0.92	1.97	-1.79	-0.35	0.13
Communication	0.37	0.37	-0.10	-0.05	-0.05
Recreation and Culture	3.70	3.39	-0.21	-0.25	-0.08
Education	1.65	2.04	0.72	1.11	1.58
Restaurants	2.46	2.73	-1.26	-1.33	-0.82
Miscellaneous Goods and Services	2.90	2.42	0.11	0.25	0.26
3. Three-month moving average CPI (All Items)					
Year on Year Change (%)	3.44	3.10	1.64	0.64	-0.25
4. Twelve-month moving average CPI (All Items)					
Year on Year Change (%)	2.14	2.13	1.84	1.64	1.58

Source: National Institute of Statistics

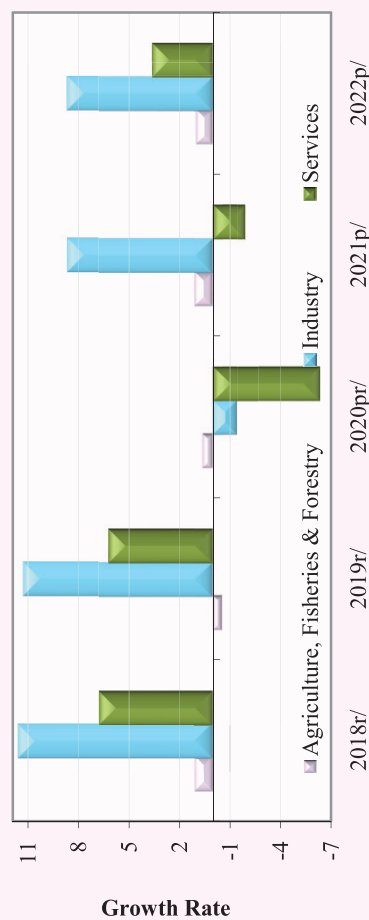
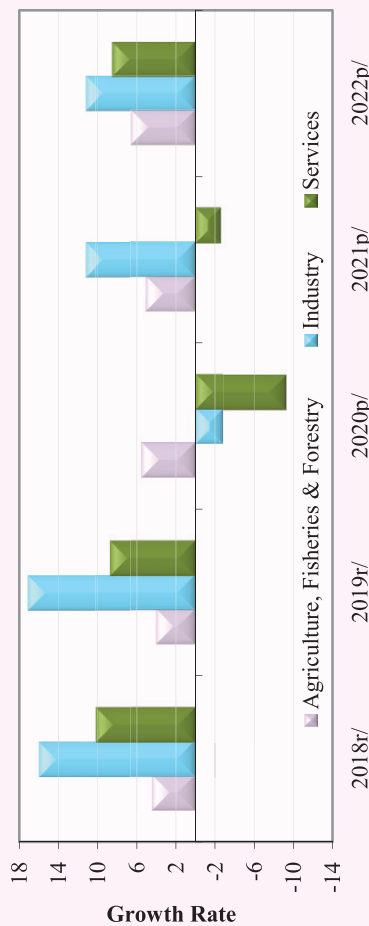
Table 2: Consumer Items Showing Price Increased in March 2024

No.	Description	Weight	Index			Percentage Change	
			Mar-23	Feb-24	Mar-24	Monthly	Yearly
1	OTHER CLOTHING (BOTH SEXES)	0.222	146.81	147.11	151.14	2.7	2.9
2	FRUIT VEGETABLES	1.138	367.96	363.34	372.88	2.6	1.3
3	SERVICES FOR THE MAINTENANCE AND REPAIR OF THE DWELLING	0.435	218.37	217.91	222.83	2.3	2.0
4	PULSES/LEGUMES	0.413	260.79	260.98	265.97	1.9	2.0
5	ROOT VEGETABLES	0.456	290.79	289.85	294.99	1.8	1.4
6	TOOLS AND EQUIPMENT FOR HOUSE AND GARDEN	0.017	230.57	227.84	231.01	1.4	0.2
7	LEAF AND STALK VEGETABLES (FRESH)	2.031	243.98	241.37	244.56	1.3	0.2
8	TUBERS AND MUSHROOMS	0.439	226.36	225.63	228.59	1.3	1.0
9	NOODLES	1.008	242.74	240.78	243.57	1.2	0.3
10	FRESH FRUITS	4.094	263.31	261.30	264.26	1.1	0.4
11	CLOTHING MATERIALS	0.334	198.65	198.78	201.00	1.1	1.2
12	HAIRDRESSING SALONS AND PERSONAL GROOMING ESTABLISHMENTS	0.081	197.04	199.16	201.34	1.1	2.2
13	HOSPITAL SERVICES	0.412	192.70	192.70	194.75	1.1	1.1
14	DRIED NUTS AND EDIBLE SEEDS	0.556	250.62	250.61	253.22	1.0	1.0
15	FOOTWEAR	0.641	191.86	193.37	195.29	1.0	1.8
16	OTHER ARTICLES OF CLOTHING AND CLOTHING ACCESSORIES	0.059	157.60	157.71	159.16	0.9	1.0
17	DAIRY PRODUCTS	1.552	178.77	177.91	179.35	0.8	0.3
18	EDUCATION	1.174	170.95	172.29	173.66	0.8	1.6
19	FOOD PRODUCTS NEC	1.404	253.19	251.20	253.13	0.8	0.0
20	CLOTHING FOR MEN AND BOYS	0.621	174.25	173.93	175.23	0.7	0.6
21	SOLID FUELS	1.475	251.37	251.06	252.92	0.7	0.6
22	HOUSEHOLD TEXTILES	0.015	201.95	201.29	202.73	0.7	0.4
23	DUCK (FRESH)	0.319	224.64	223.83	225.39	0.7	0.3
24	FISH (FRESH)	7.435	270.75	267.83	269.69	0.7	-0.4
25	OILS AND FATS	0.920	234.79	233.39	234.89	0.6	0.0
26	CLOTHING FOR WOMEN AND GIRLS	1.065	175.50	175.84	176.93	0.6	0.8
27	PROCESSED FISH AND SEAFOOD	1.646	305.04	302.98	304.83	0.6	-0.1
28	OTHER APPLIANCES, ARTICLES AND PRODUCTS FOR PERSONAL CARE	0.399	175.16	175.06	176.08	0.6	0.5
29	RECREATION AND CULTURE	2.912	130.58	129.72	130.47	0.6	-0.1
30	RICE, QUALITY NO.1 WHITE, PHAKA KANHEY, BATTAMBANG	3.052	248.88	249.26	250.69	0.6	0.7
31	GLASSWARE, TABLEWARE AND HOUSEHOLD UTENSILS	0.078	153.82	152.98	153.80	0.5	0.0
32	OTHER GRAINS	0.090	363.13	359.09	361.02	0.5	-0.6
33	PROCESSED EGGS	0.079	176.38	173.85	174.73	0.5	-0.9
34	INFANTS' CLOTHING (BELOW 1 YEAR)	0.054	144.47	144.48	145.20	0.5	0.5
35	MATERIALS FOR THE MAINTENANCE AND REPAIR OF THE DWELLING	3.663	166.91	166.27	167.06	0.5	0.1
36	HOUSEHOLD APPLIANCES	0.397	125.80	125.54	126.12	0.5	0.3
37	SPARE PARTS AND ACCESSORIES FOR PERSONAL TRANSPORT EQUIPMENT	0.084	302.58	302.50	303.71	0.4	0.4
38	FRESH EGGS	1.013	165.80	165.05	165.65	0.4	-0.1
39	DRIED AND PRESERVED FRUITS	0.086	197.38	196.17	196.85	0.3	-0.3
40	SUGAR, JAM, HONEY, CHOCOLATE AND CONFECTIONERY	1.489	166.65	167.66	168.21	0.3	0.9

Source: National Institute of Statistics

Table 3: Gross Domestic Product (GDP)

	At Constant 2000 Prices					At Current Prices				
	2018r/	2019r/	2020pr/	2021p/	2022p/	2018r/	2019r/	2020p/	2021p/	2022p/
GDP in Billion KHR	52,850	56,578	54,826	56,486	59,503	99,544	110,014	105,892	110,506	121,030
GDP in Million USD	13,001	13,901	13,444	13,889	14,552	24,488	27,030	25,967	27,171	29,599
GDP % Growth Rate	7.5	7.1	-3.1	3.0	5.3	10.8	10.5	-3.7	4.4	9.5
GDP % Growth Rate, by Economic Activity										
Agriculture, Fisheries & Forestry	1.1	-0.5	0.6	1.1	1.0	4.4	4.0	5.5	5.1	6.6
Industry	11.6	11.3	-1.4	8.7	8.7	16.0	17.1	-2.8	11.2	11.2
Services	6.8	6.2	-6.3	-1.9	3.6	10.2	8.7	-9.3	-2.6	8.5
GDP Per Capita in Million KHR	3.4	3.5	3.4	3.4	3.5	6.3	6.9	6.5	6.7	7.2
GDP Per Capita in USD	826	871	831	848	868	1,555	1,694	1,606	1,659	1,765

Chart 1: GDP by Economic Activity
(At Constant 2000 Prices)Chart 2: GDP by Economic Activity
(At Current Prices)

p/: preliminary estimates

pr/: projection

r/: revised

Source: National Institute of Statistics

Table 4: Residential Property Price Index (RPPI)

	Jan-23	Feb-23	Mar-23	Apr-23	May-23	Jun-23	Jul-23	Aug-23	Sep-23	Oct-23	Nov-23	Dec-23	Jan-24	Feb-24	Mar-24
Residential Property Price Index (2020 = 100)															
Overall RPPI	113.8	113.1	113.0	114.1	115.6	116.1	115.0	114.8	114.1	113.1	111.9	111.5	112.0	112.0	111.0
RPPI in Phnom Penh	114.8	114.6	114.7	116.2	117.5	117.5	115.9	115.9	115.2	113.8	112.2	111.4	112.3	112.7	111.8
RPPI in Other Provinces	108.2	104.9	104.1	103.1	105.7	109.3	110.4	108.9	108.4	109.7	110.4	111.5	110.4	109.3	107.7
Month on Month Change (%)															
Overall RPPI	-0.9	-0.6	-0.1	0.9	1.3	0.5	-1.0	-0.2	-0.6	-0.8	-1.1	-0.4	0.5	0.0	-0.9
RPPI in Phnom Penh	-1.0	-0.2	0.1	1.3	1.1	0.0	-1.3	0.0	-0.7	-1.2	-1.4	-0.7	0.8	0.3	-0.7
RPPI in Other Provinces	0.5	-3.1	-0.7	-1.0	2.5	3.3	1.1	-1.4	-0.4	1.2	0.7	0.9	-0.9	-1.0	-1.5
Year on Year Change (%)															
Overall RPPI	2.8	1.1	1.6	4.2	6.4	6.5	2.8	1.1	-0.4	-1.7	-2.5	-2.9	-1.6	-1.0	-1.7
RPPI in Phnom Penh	2.3	0.6	1.2	4.6	6.9	6.4	2.0	0.5	-1.1	-2.6	-3.3	-3.9	-2.1	-1.7	-2.5
RPPI in Other Provinces	7.5	5.4	6.3	4.2	5.3	8.9	9.2	6.6	5.8	5.5	3.2	3.6	2.1	4.2	3.4

Note:

The methodology used to generate the RPPI index is the time-

which complies with the IMF's RPPI Practical Compilation Guide published in 2020 (<https://www.imf.org/en/Data/Statistics/RPPI-guide>).

*Revised data

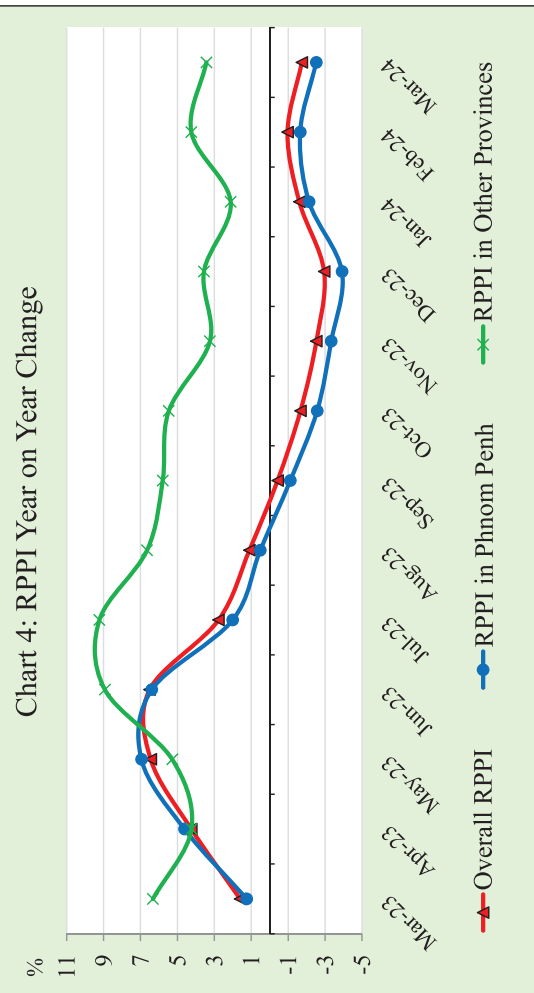
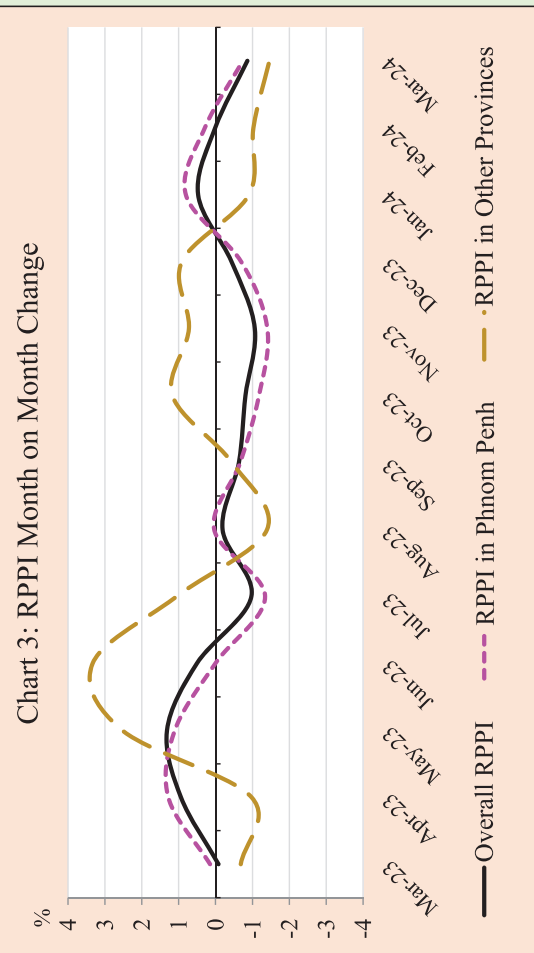


Table 5: Investment Projects Approved by Sectors

(In Million USD)

Sector	Agriculture		Industries		Services		Tourism		Energy		Health care (hospital)		Agro-Industry		Civil Engineering		Infrastructure		Mines		Other		Total	
	Projects	Fixed Assets	Projects	Fixed Assets	Projects	Fixed Assets	Projects	Fixed Assets	Projects	Fixed Assets	Projects	Fixed Assets	Projects	Fixed Assets	Projects	Fixed Assets	Projects	Fixed Assets	Projects	Fixed Assets	Projects	Fixed Assets	Projects	Fixed Assets
2018																								
Total	13	444.2	115	984.0	10	2,869.9	12	1,577.8	-	-	-	-	-	-	-	-	-	-	-	-	-	-	150	5,875.8
2019																								
Total	5	68.7	164	859.4	10	1028.3	17	6,051.6	3	158.6	-	-	-	-	-	-	-	-	-	-	-	-	199	8,166.6
2020																								
Total	7	105.6	130	1030.9	5	799.8	6	3850.5	6	678.7	-	-	-	-	-	-	-	-	-	-	-	-	154	6,465.5
2021																								
Total	5	60.3	88	980.6	2	9.9	2	127.8	5	509.7	2	18.8	-	-	-	-	-	-	-	-	-	-	107	1,718.7
2022																								
Q2	1	4.3	27	181.2	1	12.7	-	-	-	-	-	-	-	-	1	71.6	-	-	-	-	-	-	5	64.4
Q3	-	-	24	122.9	-	-	2	35.3	-	-	3	64.0	1	7.2	-	-	-	-	1	13.0	1	23.4	32	265.8
Q4	-	-	20	110.8	1	27.5	2	332.4	-	-	-	-	1	44.3	-	-	-	-	-	-	-	-	1	8.1
Total	4	79.9	99	580.9	3	50.2	5	496.6	1	389.4	4	79.0	4	60.5	2	75.8	1	1,300.0	1	13.0	8	104.1	132	3,229.6
2023																								
Q1	-	-	26	186.5	-	-	-	-	-	-	-	-	-	-	-	-	-	-	-	-	1	6.0	27	192.6
Q2	8	151.8	38	313.1	1	14.0	2	37.5	-	-	-	-	-	-	-	-	-	-	-	-	-	-	49	516.3
Q3	3	20.8	45	560.1	1	91.2	1	84.5	-	-	-	-	-	-	1	1,376.0	-	-	-	-	-	-	51	2,132.6
Q4	2	10.5	46	932.4	1	27.7	-	-	-	-	-	-	-	-	-	-	-	-	-	-	-	-	49.0	970.6
Total	13	183.0	155	1,992.1	3	132.9	3	122.0	-	-	-	-	1	1,376.0	-	-	1	1,376.0	-	-	1	6.0	176	3,812.1
2024																								
Q1	4	66.6	61	859.1	2	137.2	2	588.9	-	-	-	-	1	108.8	-	-	-	-	-	-	-	-	70	1,171.7
Total	4	66.6	61.0	859.1	2	137.2	2	588.9	-	-	-	-	1	108.8	-	-	-	-	-	-	-	-	70	1,171.7

Chart 5: Investment Fixed Assets by Sectors

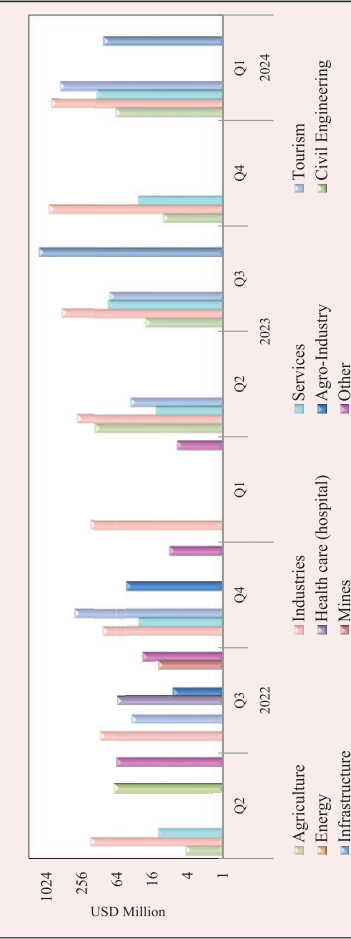
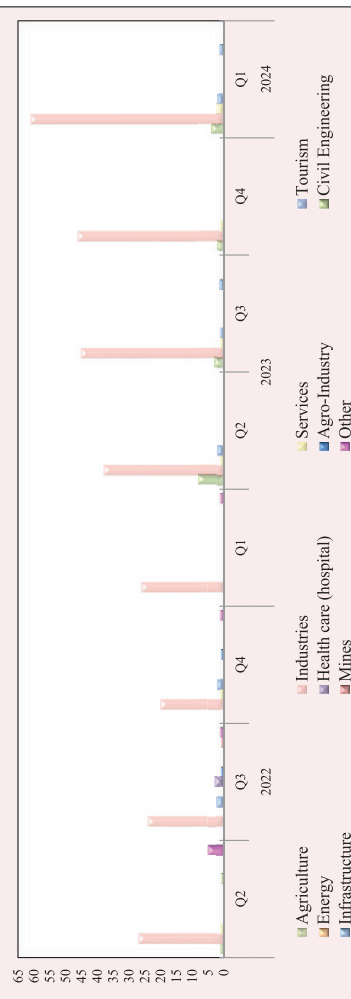


Chart 6: Number of Investment Projects by Sectors



Source: Council for the Development of Cambodia (Cambodian Investment Board)
* Revised data

Table 6: Investment Projects Approved by Major Countries*

(In Million USD)

Country	2022			2023				2024	
	Q2	Q3	Q4	Q1	Q2	Q3	Q4	Q1	
Cambodia	27.6	120.8	376.0	10.4	154.5	226.7	704.6	1,278.4	
China	214.7	95.1	125.4	101.2	233.7	1,722.6	220.4	336.4	
Korea	8.2	6.8	-	5.6	11.6	4.3	-	10.8	
United States	-	-	-	-	5.4	-	-	-	
Thailand	8.9	-	-	-	10.4	-	-	-	
Vietnam	-	-	-	-	73.4	-	-	49.0	
Malaysia	-	-	-	-	-	91.2	-	6.1	
Singapore	-	-	-	-	-	5.8	5.2	36.9	
Taiwan	18.0	17.1	5.1	66.6	-	46.2	16.7	14.3	
Australia	-	-	-	-	-	-	-	-	
England	-	-	-	-	-	-	-	-	
Japan	-	26.0	-	-	-	-	-	-	
Hong Kong	56.7	-	16.6	8.8	27.4	35.8	23.7	28.7	
Others	-	-	-	-	-	-	-	-	
Total	334.2	265.8	523.0	192.6	516.3	2,132.7	970.6	1,760.6	
				(Share of Total)					
Cambodia	8.3	45.5	71.9	5.4	29.9	10.6	72.6	72.6	
China	64.3	35.8	24.0	52.5	45.3	80.8	22.7	19.1	
Korea	2.5	2.5	-	2.9	2.2	0.2	-	0.6	
United States	-	-	-	-	1.0	-	-	-	
Thailand	2.7	-	-	-	2.0	-	-	-	
Vietnam	-	-	-	-	14.2	-	-	2.8	
Malaysia	-	-	-	-	-	4.3	-	0.3	
Singapore	-	-	-	-	-	0.3	0.5	2.1	
Taiwan	5.4	6.4	1.0	34.6	-	2.2	1.7	0.8	
Australia	-	-	-	-	-	-	-	-	
England	-	-	-	-	-	-	-	-	
Japan	-	9.8	-	-	-	-	-	-	
Hong Kong	17.0	-	3.2	4.6	5.3	1.7	2.4	1.6	
Others	-	-	-	-	-	-	-	-	
Total	100.0	100.0	100.0	100.0	100.0	100.0	100.0	100.0	

* Fixed Assets

Source: Council for the Development of Cambodia (Cambodian Investment Board)

Table 7: Daily Exchange Rate in March 2024

(KHR/USD)

Day	Parallel Market Rate			Official Rate	Daily Change*	
	Purchase	Sale	Midpoint		Spread	% Change
1	4,063	4,072	4,068	4,067	-1.0	0.0
2	4,063	4,072	4,068	4,067	0.0	0.0
3	4,063	4,072	4,068	4,067	0.0	0.0
4	4,062	4,071	4,067	4,067	-1.0	0.0
5	4,060	4,069	4,065	4,064	-2.0	0.0
6	4,058	4,067	4,063	4,065	-2.0	0.0
7	4,050	4,059	4,055	4,058	-8.0	-0.2
8	4,048	4,057	4,053	4,058	-2.0	0.0
9	4,048	4,057	4,053	4,058	0.0	0.0
10	4,048	4,057	4,053	4,058	0.0	0.0
11	4,041	4,051	4,046	4,056	-7.0	-0.2
12	4,036	4,045	4,041	4,043	-5.0	-0.1
13	4,038	4,048	4,043	4,041	2.0	0.0
14	4,043	4,055	4,049	4,043	5.0	0.1
15	4,048	4,065	4,057	4,048	5.0	0.1
16	4,042	4,054	4,048	4,048	-6.0	-0.1
17	4,042	4,054	4,048	4,048	0.0	0.0
18	4,042	4,054	4,048	4,057	0.0	0.0
19	4,043	4,054	4,049	4,048	1.0	0.0
20	4,043	4,054	4,049	4,048	0.0	0.0
21	4,043	4,054	4,049	4,049	0.0	0.0
22	4,042	4,054	4,048	4,048	-1.0	0.0
23	4,042	4,054	4,048	4,048	0.0	0.0
24	4,042	4,054	4,048	4,048	0.0	0.0
25	4,040	4,050	4,045	4,045	-2.0	0.0
26	4,040	4,049	4,045	4,042	0.0	0.0
27	4,040	4,049	4,045	4,042	0.0	0.0
28	4,040	4,049	4,045	4,042	0.0	0.0
29	4,040	4,049	4,045	4,041	0.0	0.0
30	4,040	4,049	4,045	4,041	0.0	0.0
31	4,040	4,049	4,045	4,041	0.0	0.0
Average Rate	4,046	4,056	4,051	4,051	-0.8	0.0

* Spread of Daily Purchasing Market Rate

Table 8: Monthly Exchange Rate

(KHR/USD, End-Period)

Month	Market Rate				Official Rate
	Purchase	Monthly %Change	Sale	Midpoint	
Dec-15	4,048	0.10	4,055	4,052	4,050
Dec-16	4,039	0.17	4,050	4,045	4,037
Dec-17	4,037	0.07	4,046	4,042	4,037
Dec-18	4,027	-0.27	4,039	4,033	4,018
Dec-19	4,079	0.12	4,089	4,084	4,075
Dec-20	4,069	0.00	4,084	4,077	4,045
Dec-21	4,109	0.17	4,118	4,114	4,074
2022					
Feb	4,086	-0.05	4,095	4,091	4,066
Mar	4,068	-0.44	4,078	4,073	4,050
Apr	4,068	0.00	4,080	4,074	4,046
May	4,088	0.49	4,097	4,093	4,062
Jun	4,091	0.07	4,100	4,096	4,070
Jul	4,097	0.15	4,104	4,101	4,099
Aug	4,104	0.17	4,115	4,110	4,107
Sep	4,117	0.32	4,126	4,122	4,119
Oct	4,135	0.44	4,145	4,140	4,141
Nov	4,110	-0.60	4,120	4,115	4,122
Dec	4,113	0.07	4,123	4,118	4,117
2023					
Jan	4,102	-0.27	4,113	4,108	4,104
Feb	4,050	-1.27	4,063	4,057	4,043
Mar	4,051	0.02	4,062	4,057	4,054
Apr	4,114	1.56	4,126	4,120	4,115
May	4,116	0.05	4,126	4,121	4,116
Jun	4,126	0.24	4,136	4,131	4,130
Jul	4,124	-0.05	4,134	4,129	4,130
Aug	4,151	0.65	4,161	4,156	4,158
Sep	4,119	-0.77	4,130	4,125	4,122
Oct	4,129	0.24	4,137	4,133	4,135
Nov	4,113	-0.39	4,123	4,118	4,115
Dec	4,080	-0.80	4,090	4,085	4,085
2024					
Jan	4,080	0.00	4,091	4,086	4,083
Feb	4,064	-0.39	4,073	4,069	4,069
Mar	4,040	-0.59	4,049	4,045	4,041

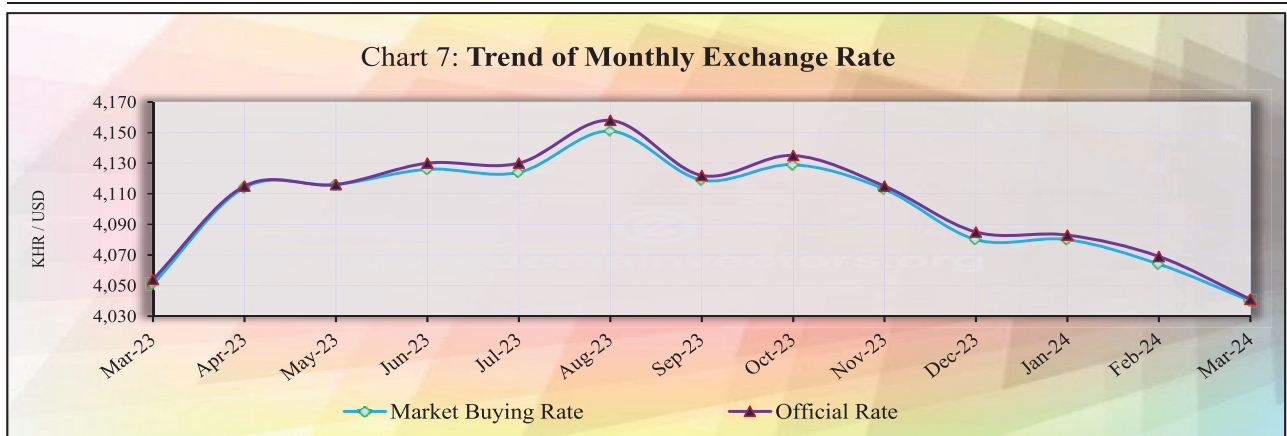


Table 9: The Value of KHR Against Other Currencies

(Official Buying Rate, End-Period)

Unit	SDR	US Dollar	Euro	Japanese Yen	British Pounds	Indonesian Rupiah	Malaysian Ringgit	Philippines Peso	Singapore Dollar	Thai Baht	Vietnamese Dong	China Yuan
	1	1	1	100	1	1000	1	100	1	1	1000	1
Dec-18	5,588	4,018	4,597	3,641	5,098	277	969	7,653	2,942	124	174	584
Dec-19	5,635	4,075	4,565	3,743	5,344	293	994	8,050	3,023	136	176	583
Dec-20	5,826	4,045	4,962	3,908	5,465	287	1,000	8,423	3,049	135	175	619
Dec-21	5,702	4,074	4,614	3,541	5,499	286	977	7,992	3,015	122	179	639
2022												
May	5,480	4,062	4,376	3,179	5,136	279	931	7,767	2,972	119	175	610
Jun	5,425	4,070	4,250	2,978	4,936	274	925	7,393	2,922	116	175	607
Jul	5,398	4,099	4,177	3,050	4,989	275	921	7,346	2,972	113	175	608
Aug	5,356	4,107	4,117	2,961	4,789	277	918	7,308	2,938	113	175	595
Sep	5,255	4,119	4,049	2,853	4,605	270	889	6,985	2,878	108	173	578
Oct	5,323	4,141	4,124	2,805	4,802	266	877	7,144	2,935	109	167	571
Nov	5,417	4,122	4,254	2,971	4,923	262	915	7,288	2,997	116	167	576
Dec	5,479	4,117	4,378	3,079	4,956	263	931	7,392	3,053	119	174	591
2023												
Jan	5,545	4,104	4,468	3,155	5,083	274	967	7,524	3,125	125	175	608
Feb	5,368	4,043	4,267	2,969	4,837	265	903	7,283	2,995	115	170	581
Mar	5,454	4,054	4,409	3,062	5,010	269	918	7,452	3,054	118	173	590
Apr	5,561	4,115	4,547	3,074	5,129	280	923	7,385	3,081	121	175	594
May	5,481	4,116	4,405	2,936	5,092	275	894	7,312	3,041	118	175	581
Jun	5,514	4,130	4,508	2,862	5,224	276	884	7,470	3,052	116	175	570
Jul	5,571	4,130	4,527	2,956	5,291	274	907	7,526	3,098	121	174	577
Aug	5,513	4,158	4,518	2,840	5,253	273	895	7,330	3,071	118	172	570
Sep	5,405	4,122	4,336	2,759	5,015	266	876	7,235	3,006	112	169	565
Oct	5,418	4,135	4,363	2,764	5,002	260	868	7,261	3,023	115	168	565
Nov	5,487	4,115	4,523	2,793	5,226	267	885	7,431	3,091	118	170	578
Dec	5,481	4,085	4,541	2,899	5,231	265	887	7,363	3,102	120	168	575
2024												
Jan	5,427	4,083	4,419	2,769	5,181	259	864	7,239	3,048	116	167	569
Feb	5,406	4,069	4,401	2,699	5,142	260	854	7,240	3,022	113	165	565
Mar	5,354	4,041	4,361	2,670	5,094	255	854	7,190	2,994	111	163	559
Monthly % Change	-0.96	-0.69	-0.91	-1.07	-0.93	-1.92	0.00	-0.69	-0.93	-1.77	-1.21	-1.06

Table 10: Deposit Money Bank's Interest Rates on Deposits and Loans in KHR and USD

	Dec-19	Dec-20	Dec-21	Aug-22	Sep-22	Nov-22	Dec-22	Jan-23	Feb-23	Mar-23	Apr-23	May-23	Jun-23	Jul-23	Aug-23	Sep-23	Oct-23	Nov-23	Dec-23	Jan-24	Feb-24	Mar-24	
<i>Weighted Average Rate on New Amount</i>																							
Interest Rate on Deposits and Loans in KHR																							
Deposit																							
Demand Deposits	0.12	0.03	0.35	0.09	0.17	0.20	0.29	0.19	0.25	0.18	0.19	0.16	0.20	0.18	0.18	0.25	0.24	0.24	0.24	0.19	0.18	0.16	0.28
Saving Deposits	0.60	0.60	1.05	0.73	0.77	0.81	0.85	0.85	0.88	0.89	0.88	0.87	0.88	0.89	0.87	0.89	0.89	0.91	0.83	0.83	0.92	0.83	0.80
Term Deposits	4.10	5.34	4.79	6.78	5.90	6.39	6.12	6.29	6.70	7.45	6.64	7.00	6.67	6.91	6.61	6.64	6.65	6.82	6.54	6.69	6.09	5.76	5.76
Other Deposits	2.47	3.49	2.20	2.31	4.97	5.64	7.16	6.32	5.06	7.10	6.72	4.77	6.99	6.52	6.10	6.28	6.23	6.51	7.09	7.10	7.18	6.96	6.96
Overdraft	7.72	7.14	6.32	9.87	13.61	7.44	7.38	7.99	8.49	9.41	9.42	9.06	9.46	9.48	10.66	10.49	10.48	8.89	7.61	8.90	8.71	8.86	8.86
Credit Card	16.73	14.21	13.84	14.73	12.96	14.13	15.66	12.72	14.72	13.68	15.73	13.62	13.61	14.01	14.97	13.24	14.34	14.02	16.20	14.52	12.80	12.80	12.05
Term Loans	9.13	10.15	10.18	11.59	11.60	11.38	10.88	12.03	12.61	12.28	11.82	12.35	11.86	11.87	11.42	12.08	12.69	12.25	11.40	12.45	12.67	12.32	12.32
Other Loans	5.59	6.47	7.00	6.99	7.02	7.18	5.24	7.54	7.41	7.67	7.20	7.60	6.89	6.65	6.88	6.71	7.05	7.52	4.93	6.63	6.94	6.94	6.93
Interest Rate on Deposits and Loans in USD																							
Deposit																							
Demand Deposits	0.20	0.10	0.18	0.18	0.18	0.25	0.32	0.29	0.33	0.36	0.33	0.36	0.37	0.38	0.33	0.43	0.42	0.43	0.26	0.37	0.35	0.35	0.65
Saving Deposits	0.24	0.17	0.21	0.22	0.22	0.24	0.30	0.28	0.28	0.28	0.30	0.31	0.41	0.30	0.26	0.30	0.32	0.28	0.42	0.35	0.36	0.36	0.36
Term Deposits	3.44	3.24	3.98	4.44	4.72	5.12	5.59	5.28	5.54	5.53	5.42	5.63	5.75	5.49	5.71	5.84	5.57	5.87	6.08	5.83	5.86	5.67	5.67
Other Deposits	2.47	0.80	3.93	4.30	4.42	6.29	6.57	5.75	3.08	6.85	6.39	6.83	7.14	6.19	6.64	7.42	6.46	7.57	6.20	6.88	7.48	7.42	7.42
Loans																							
Overdraft	7.57	6.15	5.97	8.08	7.56	7.48	7.68	7.39	7.71	7.39	7.45	7.81	7.93	7.53	8.32	8.08	8.25	8.30	8.13	8.30	8.47	8.04	8.04
Credit Card	11.97	17.02	17.27	17.58	17.37	17.68	17.45	18.02	17.51	17.84	17.91	17.99	17.82	17.70	17.51	17.22	18.14	17.72	18.25	17.05	16.90	17.33	17.33
Term Loans	8.72	9.11	9.09	9.39	11.45	9.49	9.10	9.88	10.19	9.70	9.83	9.61	9.46	10.13	9.88	10.46	10.57	10.41	9.78	10.34	10.35	10.05	10.05
Other Loans	6.50	6.01	5.93	6.33	6.04	6.63	6.67	6.78	6.75	6.84	7.28	7.36	7.41	7.22	7.28	7.41	7.51	7.69	7.23	7.55	7.66	7.66	7.68
<i>Weighted Average Rate on Outstanding Amount</i>																							
Interest Rate on Deposits and Loans in KHR																							
Deposit																							
Demand Deposits	0.22	0.19	0.47	0.46	0.45	0.55	0.54	0.42	0.47	0.37	0.43	0.42	0.40	0.44	0.47	0.51	0.51	0.54	0.57	0.54	0.59	0.43	0.43
Saving Deposits	0.91	0.82	1.02	1.02	1.02	0.92	1.12	1.18	1.16	1.12	1.09	1.18	1.18	1.18	1.18	1.23	1.23	1.27	1.24	1.25	1.15	1.15	1.15
Term Deposits	5.42	5.66	5.85	6.30	6.37	6.51	6.63	6.71	6.84	7.03	7.10	7.20	7.21	7.28	7.25	7.32	7.31	7.28	7.34	7.35	7.32	7.30	7.30
Other Deposits	2.81	3.20	2.20	1.49	1.39	2.17	2.23	1.88	1.66	1.63	1.71	1.74	2.32	2.39	5.97	6.26	6.30	6.56	6.67	6.38	6.90	6.72	6.72
Loans																							
Overdraft	8.08	7.93	8.26	8.60	8.57	8.33	8.48	8.47	8.42	8.41	8.44	8.45	8.40	8.44	8.46	8.48	8.51	8.09	8.14	8.14	8.15	8.15	8.13
Credit Card	17.29	16.25	15.30	14.68	14.28	14.36	14.26	14.07	14.13	14.06	13.94	14.16	14.05	14.10	13.95	13.78	13.73	13.82	13.85	13.80	13.78	13.71	13.71
Term Loans	10.62	10.54	10.52	10.60	10.60	10.61	10.62	10.65	10.67	10.68	10.69	10.72	10.76	10.75	10.75	11.30	11.32	11.31	11.32	11.36	11.36	11.33	11.33
Other Loans	6.28	6.73	6.67	6.40	6.77	6.61	6.46	6.64	6.53	6.61	6.63	6.57	6.58	6.47	6.70	6.44	6.44	6.39	6.06	6.33	6.30	6.30	6.34
Interest Rate on Deposits and Loans in USD																							
Deposit																							
Demand Deposits	0.35	0.41	0.40	0.42	0.44	0.56	0.60	0.70	0.76	0.77	0.72	0.79	0.75	0.79	0.81	0.79	0.81	0.85	0.88	0.89	0.96	1.00	1.00
Saving Deposits	0.43	0.41	0.47	0.56	0.58	0.55	0.65	0.66	0.66	0.67	0.67	0.72	0.71	0.75	0.71	0.77	0.79	0.78	0.78	0.80	0.73	0.75	0.75
Term Deposits	4.34	4.40	4.53	4.83	4.91	5.10	5.26	5.34	5.46	5.58	5.65	5.75	5.85	5.93	6.01	6.24	6.28	6.25	6.38	6.40	6.41	6.40	6.40
Other Deposits	2.43	0.94	3.28	1.95	1.05	2.35	2.76	2.45	2.47	2.49	2.28	2.47	2.13	2.11	4.56	4.62	4.70	4.78	3.90	4.72	4.59	4.83	4.83
Loans																							
Overdraft	7.82	7.71	7.47	7.37	7.39	7.36	7.38	7.44	7.44	7.45	7.45	7.49	7.51	7.53	7.57	7.83	7.67	7.69	7.71	7.68	7.71	7.72	7.72
Credit Card	15.53	17.11	16.62	16.27	16.64	16.19	16.13	16.33	16.16	16.08	16.33	16.12	16.15	16.15	16.03	15.99	15.95	16.04	16.06	16.07	15.99	15.85	15.85
Term Loans	9.51	9.36	9.18	9.15	9.16	9.18	9.22	9.24	9.22	9.25	9.26	9.27	9.28	9.30	9.31	9.73	9.73	9.76	9.75	9.75	9.76	9.76	9.76
Other Loans	7.19	6.93	6.83	6.78	7.08	6.89	6.86	6.92	7.03	7.12	7.13	7.15	7.08	7.31	7.33	7.38	7.40	7.44	7.47	7.46	7.45	7.45	8.27

Including Commercial Banks and Specialized Banks

**Revised Data*

Table 11: Central Bank Survey*

(In Billion KHR)

	Nov-23	Dec-23	Jan-24	Feb-24	Mar-24
Net Foreign Assets	74,996.7	80,304.6	79,375.4	77,119.1	77,976.3
Claims on Nonresidents	76,387.0	81,693.4	80,750.6	78,489.0	79,333.1
Liabilities to Nonresidents	-1,390.3	-1,388.8	-1,375.2	-1,369.9	-1,356.8
Claims on Other Depository Corporations	1,051.1	1,161.9	1,020.9	1,076.2	1,179.5
Net Claims on Central Government	-11,739.5	-11,956.1	-10,895.5	-9,988.2	-10,991.2
Claims on Central Government	0.0	0.0	0.0	0.0	0.0
Liabilities to Central Government	-11,739.5	-11,956.1	-10,895.5	-9,988.2	-10,991.2
Claims on Other Sectors	45.6	31.3	35.6	40.0	47.5
Claims on Other Financial Corporations	0.0	0.0	0.0	0.0	0.0
Claims on State and Local Government	0.0	0.0	0.0	0.0	0.0
Claims on Public Nonfinancial Corporations	0.0	0.0	0.0	0.0	0.0
Claims on Private Sector	45.6	31.3	35.6	40.0	47.5
Monetary Base	55,829.5	59,166.0	59,012.5	57,366.1	57,480.4
Currency in Circulation	17,552.1	17,345.9	17,298.3	17,820.6	18,516.0
Liabilities to Other Depository Corporations	38,251.9	41,795.1	41,690.0	39,519.8	38,911.6
Liabilities to Other Sectors	25.5	25.1	24.2	25.7	52.8
Other Liabilities to Other Depository Corporations	8,776.7	8,541.0	9,550.5	10,572.3	9,557.3
Deposits And Securities Other Than Shares Excl. Form Monetary Base	49.6	49.4	49.3	49.3	49.1
Deposits Included in Broad Money	0.0	0.0	0.0	0.0	0.0
Securities Other Than Shares Incl. in Broad Money	0.0	0.0	0.0	0.0	0.0
Deposits Excl. From Broad Money	49.6	49.4	49.3	49.3	49.1
Securities Other Than Shares Excl. From Broad Money	0.0	0.0	0.0	0.0	0.0
Loans	0.0	0.0	0.0	0.0	0.0
Financial Derivatives	0.0	0.0	0.0	0.0	0.0
Shares and Other Equity	2,903.0	4,973.9	4,453.8	3,698.1	4,547.8
Other Items (Net)	-3,204.9	-3,188.5	-3,529.7	-3,438.6	-3,422.5
<i>IFS Vertical Check</i>	<i>0.0</i>	<i>0.0</i>	<i>0.0</i>	<i>0.0</i>	<i>0.0</i>

* Included only central bank

** Revised Data

Table 12: Other Depository Corporations Survey*

(In Billion KHR)

	Nov-23	Dec-23	Jan-24	Feb-24	Mar-24
Net Foreign Assets	-17,050.4	-19,069.4	-19,031.9	-14,578.1	-11,426.3
Claims on Nonresidents	29,126.4	26,264.0	27,781.6	28,366.0	30,321.9
Liabilities to Nonresidents	-46,176.8	-45,333.4	-46,813.5	-42,944.1	-41,748.2
Claims On Central Bank	48,842.6	52,109.3	52,817.4	51,756.5	49,831.3
Currency	2,668.6	2,370.9	2,365.3	2,386.1	2,484.7
Reserve Deposits and Securities Other Than Shares	46,163.6	49,729.5	50,394.7	49,317.7	47,297.5
Other Claims on Central Bank	10.3	8.9	57.5	52.6	49.1
Net Claims on Central Government	-8,884.1	-9,445.3	-9,989.2	-10,160.0	-10,144.6
Claims on Central Government	363.7	329.6	320.8	360.6	436.1
Liabilities to Central Government	-9,247.9	-9,774.9	-10,309.9	-10,520.7	-10,580.7
Claims on Other Sectors	230,678.2	230,825.1	230,430.3	230,094.6	229,589.5
Claims on Other Financial Corporations	4,639.1	4,364.3	4,044.0	4,054.3	3,950.2
Claims on State and Local Government	0.0	0.0	0.0	0.0	0.0
Claims on Public Nonfinancial Corporations	0.8	31.0	14.7	6.5	27.4
Claims on Private Sector	226,038.3	226,429.7	226,371.5	226,033.8	225,611.9
Liabilities to Central Bank	3,687.5	3,725.0	3,725.7	3,704.8	3,665.1
Transferable Deposits Incl. in Broad Money	28,631.5	27,908.9	27,851.0	29,172.8	28,585.2
Other Deposits Incl. in Broad Money	148,528.2	150,621.5	152,612.2	154,127.2	155,768.6
Securities Other Than Shares Incl. in Broad Money	0.0	0.0	0.0	0.0	0.0
Deposits Excl. From Broad Money	231.2	255.8	171.9	157.7	196.3
Securities Other Than Shares Excl. From Broad Money	0.0	0.0	0.0	0.0	0.0
Loans	2,331.8	2,261.9	2,262.9	2,310.7	2,100.7
Financial Derivatives	0.0	0.0	0.0	0.0	0.0
Shares and Other Equity	61,670.1	61,635.7	61,414.0	61,313.6	61,059.8
Other Items (Net)	8,506.0	8,010.9	6,188.9	6,326.2	6,474.2
<i>IFS Vertical Check</i>	<i>0.0</i>	<i>0.0</i>	<i>0.0</i>	<i>0.0</i>	<i>0.0</i>

* Included commercial banks and MDIs

** Revised Data

Table 13: Depository Corporations Survey*

(In Billion KHR)

	Nov-23	Dec-23	Jan-24	Feb-24	Mar-24
Net Foreign Assets	57,946.3	61,235.2	60,343.5	62,541.1	66,550.1
Claims on Nonresidents	105,513.4	107,957.4	108,532.2	106,855.0	109,655.1
Liabilities to Nonresidents	-47,567.2	-46,722.2	-48,188.6	-44,314.0	-43,105.0
Domestic Claims	210,100.2	209,455.0	209,581.2	209,986.4	208,501.2
Net Claims on Central Government	-20,623.6	-21,401.4	-20,884.6	-20,148.2	-21,135.8
Claims on Central Government	363.7	329.6	320.8	360.6	436.1
Liabilities to Central Government	-20,987.4	-21,731.0	-21,205.4	-20,508.8	-21,571.9
Claims on Other Sectors	230,723.8	230,856.4	230,465.8	230,134.6	229,637.0
Claims on Other Financial Corporations	4,639.1	4,364.3	4,044.0	4,054.3	3,950.2
Claims on State and Local Government	0.0	0.0	0.0	0.0	0.0
Claims on Public Nonfinancial Corporations	0.8	31.0	14.7	6.5	27.4
Claims on Private Sector	226,083.9	226,461.0	226,407.1	226,073.8	225,659.4
Broad Money Liabilities (M2)	192,068.6	193,530.5	195,420.5	198,760.2	200,437.9
Currency Outside Depository Corporations	14,883.5	14,975.0	14,933.0	15,434.5	16,031.3
Transferable Deposits	28,638.9	27,916.0	27,857.2	29,180.6	28,620.0
Other Deposits	148,546.3	150,639.5	152,630.2	154,145.1	155,786.6
Securities Other Than Shares	0.0	0.0	0.0	0.0	0.0
<i>of which Foreign Currency (of M2)</i>	<i>159,903.2</i>	<i>161,308.1</i>	<i>163,283.1</i>	<i>165,845.2</i>	<i>167,656.6</i>
Deposits Excl. From Broad Money	280.7	305.1	221.2	207.1	245.3
Securities Other Than Shares Excl. From Broad Money	0.0	0.0	0.0	0.0	0.0
Loans	2,331.8	2,261.9	2,262.9	2,310.7	2,100.7
Financial Derivative	0.0	0.0	0.0	0.0	0.0
Shares and Other Equity	64,573.0	66,609.6	65,867.8	65,011.7	65,607.6
Other Items (Net)	8,792.2	7,983.1	6,152.4	6,237.9	6,659.8
<i>IFS Vertical Check</i>	<i>0.0</i>	<i>0.0</i>	<i>0.0</i>	<i>0.0</i>	<i>0.0</i>

* Included data of central bank and other depository corporations(ODCs)

** Revised Data

Table 14: Other Financial Corporations Survey*

(In Billion KHR)

	Nov-23	Dec-23	Jan-24	Feb-24	Mar-24
Net Foreign Assets	-1,083.6	-1,126.7	-1,110.7	-1,091.3	-1,170.2
Claims on Nonresidents	459.2	399.2	441.7	444.0	260.9
Liabilities to Nonresidents	-1,542.9	-1,526.0	-1,552.4	-1,535.3	-1,431.1
Claims on Depository Corporations	4,984.4	4,790.9	5,256.9	4,817.8	6,542.3
Net Claims on Central Government	-13.3	-13.8	-14.3	-14.1	-11.2
Claims on Central Government	5.4	5.4	5.6	5.7	4.4
Liabilities to Central Government	-18.7	-19.2	-19.9	-19.8	-15.6
Claims on Other Sectors	8,436.0	8,502.7	9,855.4	8,605.1	8,551.5
Claims on State and Local Government	0.0	0.0	0.0	0.0	0.0
Claims on Public Nonfinancial Corporations	4.0	2.7	2.7	2.7	1.5
Claims on Private Sector	8,432.1	8,500.1	9,852.8	8,602.5	8,550.0
Deposit	1.6	1.7	1.5	1.6	1.7
Securities Other Than Shares	0.0	0.0	0.0	0.0	0.8
Loans	5,046.4	4,968.5	6,252.5	4,970.9	4,967.8
Financial Derivatives	0.0	0.0	0.0	0.0	0.0
Shares and Other Equity	5,446.2	5,397.2	5,860.0	5,416.3	7,024.3
Other Items (Net)	-207.3	-279.9	-192.3	-136.9	-104.6
<i>IFS Vertical Check</i>	<i>0.0</i>	<i>0.0</i>	<i>0.0</i>	<i>0.0</i>	<i>0.0</i>

* Included only specialized banks from Dec-2013 to Dec-2020.
From Jan-2021 to present, OFCs included Specialized Banks,
MFIs and Insurance Companies.

** Revised Data

Table 15: Financial Corporations Survey*

(In Billion KHR)

	Nov-23	Dec-23	Jan-24	Feb-24	Mar-24
Net Foreign Assets	56,862.6	60,108.5	59,232.8	61,449.8	65,379.9
Claims on Nonresidents	105,972.7	108,356.6	108,973.9	107,299.1	109,915.9
Liabilities to Nonresidents	-49,110.0	-48,248.1	-49,741.0	-45,849.3	-44,536.0
Domestic Claims	213,883.8	213,579.6	215,378.3	214,523.2	213,091.3
Net Claims on Central Government	-20,637.0	-21,415.2	-20,898.9	-20,162.3	-21,147.0
Claims on Central Government	369.1	335.1	326.3	366.3	440.5
Liabilities to Central Government	-21,006.1	-21,750.2	-21,225.2	-20,528.6	-21,587.5
Claims on Other Sectors	234,520.8	234,994.8	236,277.2	234,685.4	234,238.3
Claims on State and Local Government	0.0	0.0	0.0	0.0	0.0
Claims on Public Nonfinancial Corporations	4.8	33.7	17.4	9.1	28.9
Claims on Private Sector	234,516.0	234,961.1	236,259.8	234,676.3	234,209.5
Currency Outside Financial Corporations	14,872.1	14,963.9	14,921.9	15,424.8	15,959.6
Deposits	174,442.0	175,860.1	177,637.3	180,414.6	181,591.3
Securities Other Than Shares	0.0	0.0	0.0	0.0	0.0
Loans	7,008.8	6,900.2	8,146.2	6,934.8	6,742.6
Financial Derivatives	0.0	0.0	0.0	0.0	0.0
Shares and Other Equity	70,019.3	72,006.9	71,727.7	70,428.0	72,632.0
Other Items (Net)	2,367.7	1,891.4	112.3	705.2	-476.7
<i>IFS Vertical Check</i>	<i>0.0</i>	<i>0.0</i>	<i>0.0</i>	<i>0.0</i>	<i>0.0</i>

* Included data of depository corporations and other financial corporations

** Revised Data

Chart 8: Financial Corporations Survey

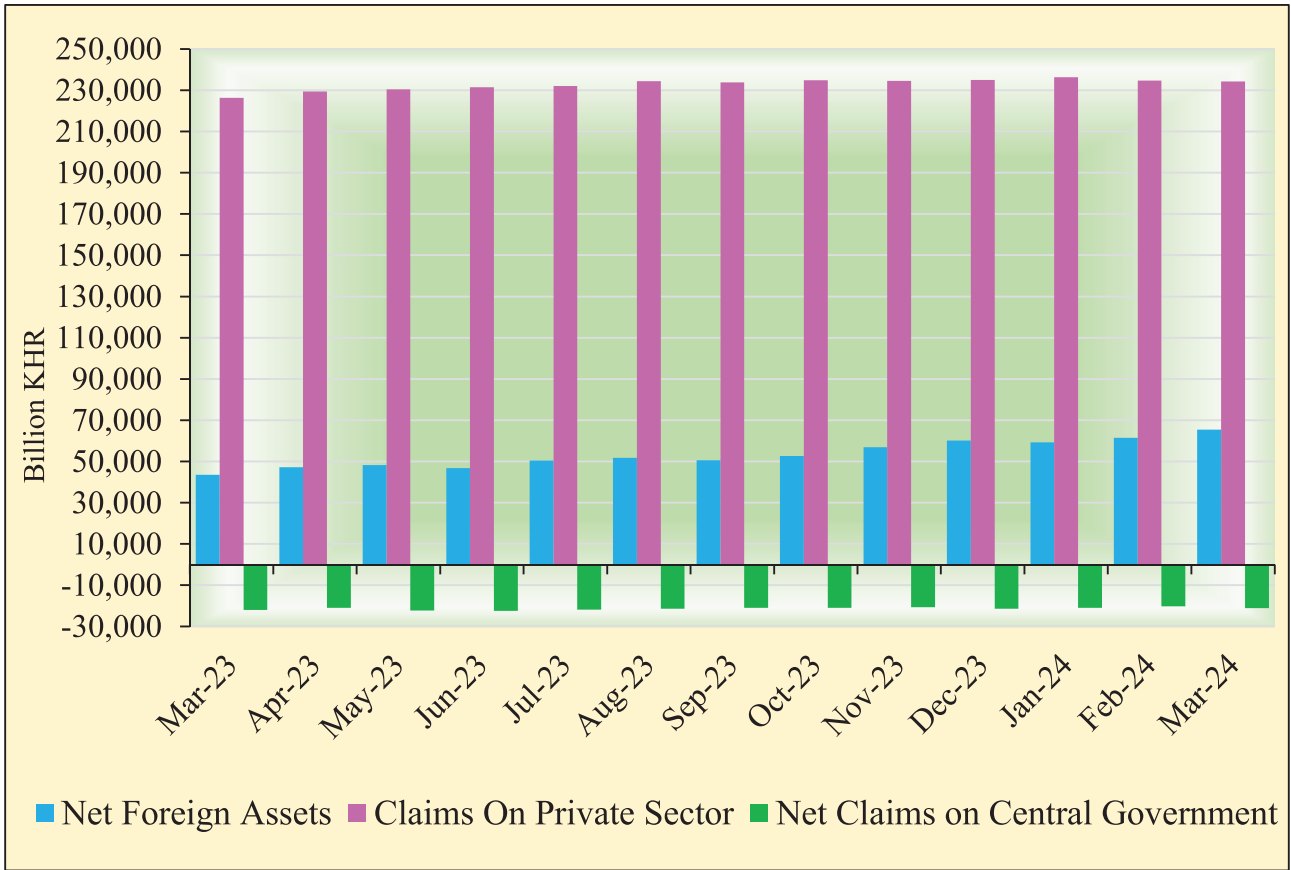


Chart 9: Monetary Aggregates Components

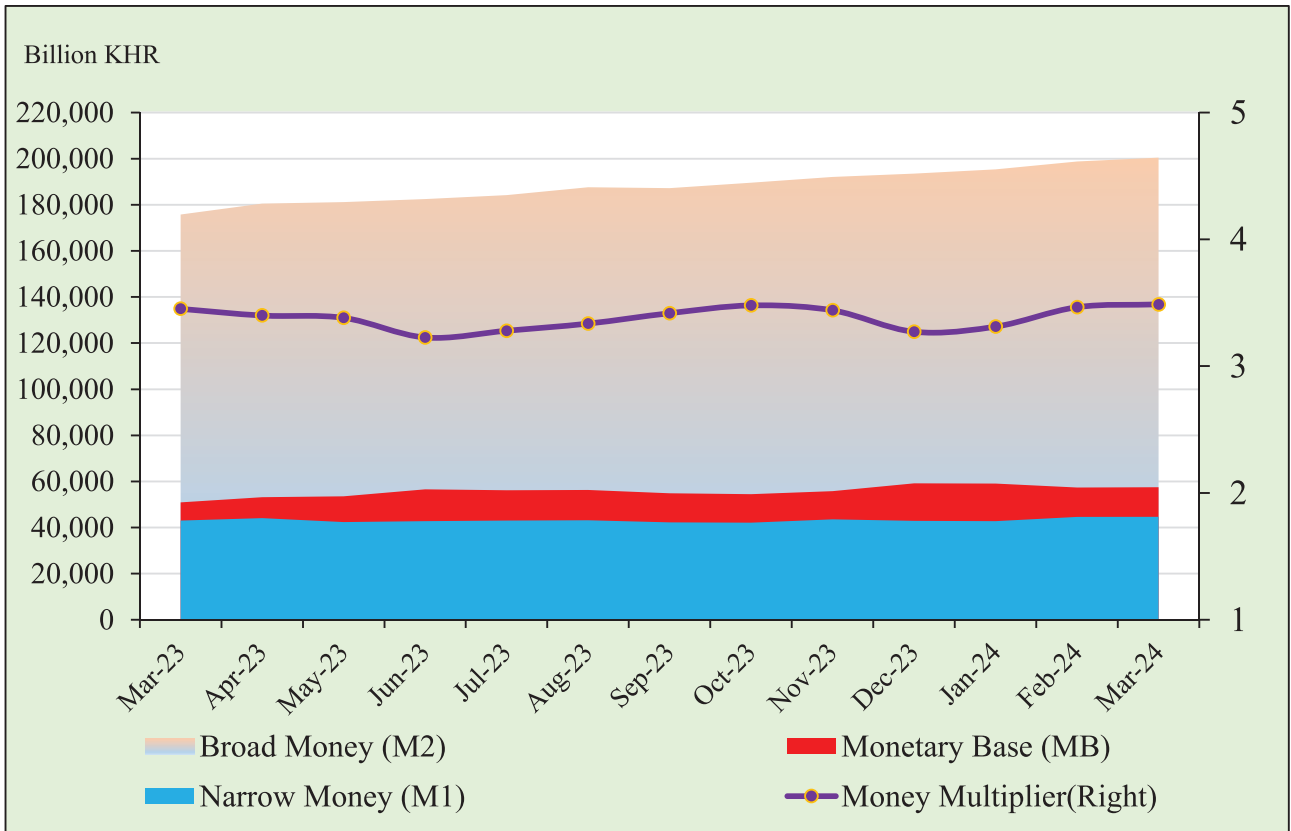


Table 16: Credit Granted by Banking Institutions Classified by Industry

(In Billion KHR)

	Nov-23	Dec-23	Jan-24	Feb-24	Mar-24
1. Financial Institutions	7,829.2	7,834.8	7,525.5	7,369.0	7,021.9
1.1. National Bank of Cambodia	0.0	0.0	0.0	0.0	0.0
1.2. Depository Institutions	5,984.9	5,979.7	5,727.9	5,594.2	5,255.4
1.3. Other Financial Institutions	1,844.3	1,855.1	1,797.6	1,774.7	1,766.6
2. Non-Financial Institutions	159,383.6	160,915.0	161,876.5	161,426.2	160,893.9
2.1. Agriculture, Forestry and Fishing	19,256.2	19,248.2	19,339.3	19,250.7	19,095.8
2.2. Mining and Quarrying	1,054.1	1,089.1	1,106.0	1,135.3	1,153.9
2.3. Manufacturing	9,316.9	9,333.5	9,494.5	9,447.7	9,380.5
2.4. Utilities	2,491.8	2,415.4	2,405.3	2,489.3	2,503.7
2.5. Construction	20,200.9	20,829.2	20,431.7	20,436.6	20,600.1
2.6. Wholesale Trade	19,191.9	19,278.3	18,961.1	18,951.9	18,629.1
2.7. Retail Trade	37,347.1	37,170.6	37,352.4	37,336.8	37,049.4
2.8. Hotels and Restaurants	8,455.9	8,406.4	8,450.8	8,136.7	8,120.8
2.9. Transport and Storage	6,058.5	6,060.4	6,433.7	6,355.3	6,310.8
2.10. Information Media and Telecommunications	1,085.4	1,073.0	1,092.7	1,029.5	1,059.3
2.11. Rental and Operational Leasing Activities, Excluding Real Estate Leasing and Rentals	2,864.1	2,854.5	2,846.4	2,920.1	2,862.3
2.12. Real Estate Activities	20,909.4	22,177.5	22,867.7	22,821.9	23,340.3
2.13. Other Non-Financial Services	11,151.3	10,979.0	11,094.8	11,114.3	10,788.0
3. Personal Essentials	49,417.1	49,712.3	48,521.3	48,666.0	48,981.4
3.1. Personal Lending	20,079.3	20,544.6	20,023.7	20,339.9	20,845.8
3.2. Credit Cards	690.5	709.2	729.7	720.7	733.6
3.3. Mortgages, Owner-Occupied Housing only	28,647.3	28,458.5	27,768.0	27,605.4	27,402.0
4. Other Lending	3,937.1	2,753.3	2,926.7	2,962.2	2,930.5
Total Gross Loan	220,567.0	221,215.4	220,850.1	220,423.3	219,827.7

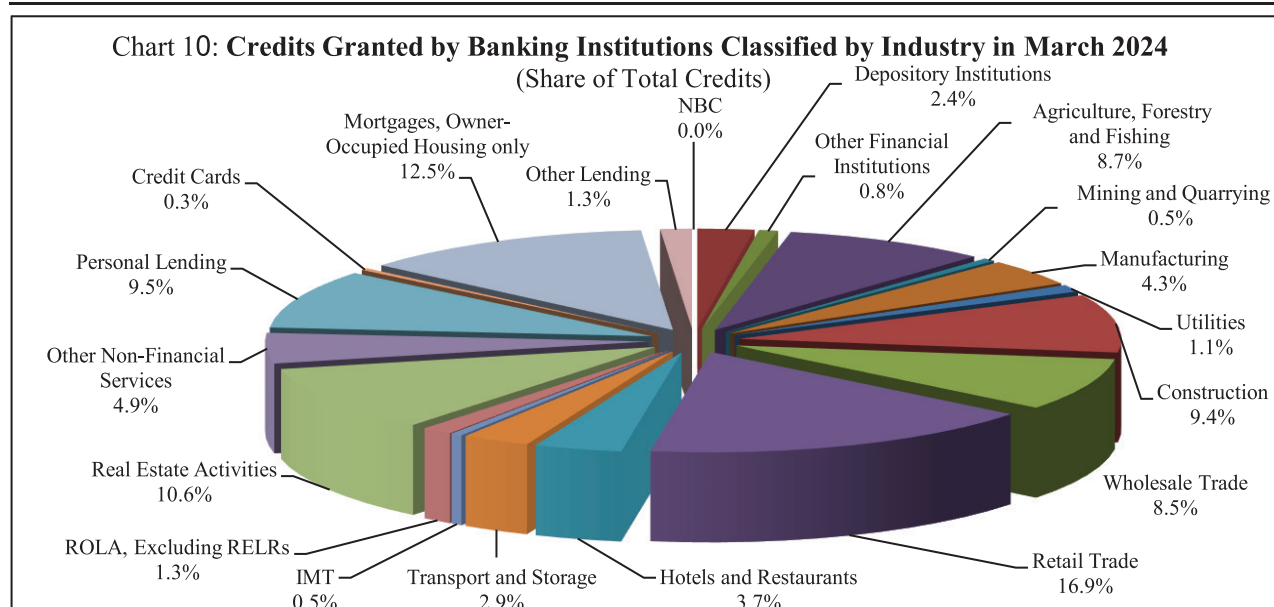


Table 17: Monthly Change of Credit Granted by Banking Institutions Classified by Industry

	Nov-23	Dec-23	Jan-24	Feb-24	Mar-24
(Monthly Change in Billion KHR)					
1. Financial Institutions	-233.1	5.6	-309.2	-156.6	-347.0
1.1. National Bank of Cambodia	0.0	0.0	0.0	0.0	0.0
1.2. Depository Institutions	-200.5	-5.2	-251.7	-133.7	-338.9
1.3. Other Financial Institutions	-32.6	10.9	-57.5	-22.9	-8.2
2. Non-Financial Institutions	298.3	1,531.4	961.5	-450.4	-532.3
2.1. Agriculture, Forestry and Fishing	-7.9	-8.1	91.1	-88.7	-154.9
2.2. Mining and Quarrying	11.4	34.9	16.9	29.4	18.6
2.3. Manufacturing	49.1	16.5	161.1	-46.8	-67.2
2.4. Utilities	18.6	-76.5	-10.1	84.1	14.3
2.5. Construction	-201.3	628.3	-397.4	4.9	163.4
2.6. Wholesale Trade	-112.8	86.4	-317.2	-9.2	-322.8
2.7. Retail Trade	57.1	-176.5	181.8	-15.6	-287.5
2.8. Hotels and Restaurants	47.2	-49.5	44.4	-314.1	-15.9
2.9. Transport and Storage	-8.5	1.9	373.3	-78.4	-44.5
2.10. Information Media and Telecommunications	21.3	-12.4	19.7	-63.3	29.9
2.11. Rental and Operational Leasing Activities, Excluding Real Estate Leasing and Rentals	32.2	-9.6	-8.1	73.7	-57.8
2.12. Real Estate Activities	-204.3	1,268.2	690.2	-45.8	518.4
2.13. Other Non-Financial Services	596.2	-172.3	115.8	19.4	-326.3
3. Personal Essentials	-408.5	295.2	-1,191.0	144.7	315.4
3.1. Personal Lending	-260.0	465.3	-520.9	316.2	505.9
3.2. Credit Cards	18.7	18.7	20.5	-9.0	12.9
3.3. Mortgages, Owner-Occupied Housing only	-167.3	-188.8	-690.5	-162.6	-203.4
4. Other Lending	-37.5	-1,183.8	173.4	35.5	-31.7
Total Gross Loan	-380.8	648.4	-365.3	-426.8	-595.6
(Monthly Percentage Change)					
1. Financial Institutions	-2.9	0.1	-3.9	-2.1	-4.7
1.1. National Bank of Cambodia	0.0	0.0	0.0	0.0	0.0
1.2. Depository Institutions	-3.2	-0.1	-4.2	-2.3	-6.1
1.3. Other Financial Institutions	-1.7	0.6	-3.1	-1.3	-0.5
2. Non-Financial Institutions	0.2	1.0	0.6	-0.3	-0.3
2.1. Agriculture, Forestry and Fishing	0.0	0.0	0.5	-0.5	-0.8
2.2. Mining and Quarrying	1.1	3.3	1.6	2.7	1.6
2.3. Manufacturing	0.5	0.2	1.7	-0.5	-0.7
2.4. Utilities	0.8	-3.1	-0.4	3.5	0.6
2.5. Construction	-1.0	3.1	-1.9	0.0	0.8
2.6. Wholesale Trade	-0.6	0.5	-1.6	0.0	-1.7
2.7. Retail Trade	0.2	-0.5	0.5	0.0	-0.8
2.8. Hotels and Restaurants	0.6	-0.6	0.5	-3.7	-0.2
2.9. Transport and Storage	-0.1	0.0	6.2	-1.2	-0.7
2.10. Information Media and Telecommunications	2.0	-1.1	1.8	-5.8	2.9
2.11. Rental and Operational Leasing Activities, Excluded Real Estate Leasing and Rentals	1.1	-0.3	-0.3	2.6	-2.0
2.12. Real Estate Activities	-1.0	6.1	3.1	-0.2	2.3
2.13. Other Non-Financial Services	5.6	-1.5	1.1	0.2	-2.9
3. Personal Essentials	-0.8	0.6	-2.4	0.3	0.6
3.1. Personal Lending	-1.3	2.3	-2.5	1.6	2.5
3.2. Credit Cards	2.8	2.7	2.9	-1.2	1.8
3.3. Mortgages, Owner-Occupied Housing only	-0.6	-0.7	-2.4	-0.6	-0.7
4. Other Lending	-0.9	-30.1	6.3	1.2	-1.1
Total Gross Loan	-0.2	0.3	-0.2	-0.2	-0.3

Table 18: Deposits with Banks

(In Billion KHR)

	Nov-23	Dec-23	Jan-24	Feb-24	Mar-24
Deposits in KHR					
Demand deposits	4,288.0	4,382.4	4,450.5	4,531.1	4,691.9
Savings deposits	4,168.4	4,262.1	4,179.6	4,284.8	4,242.8
Fixed deposits	12,298.3	12,372.1	12,609.5	12,630.1	12,291.8
Others	420.3	411.6	410.1	425.7	416.7
Total	21,175.0	21,428.3	21,649.7	21,871.6	21,643.2
Deposits in Foreign Currency*					
Demand deposits	28,344.2	27,460.7	27,433.4	28,708.7	28,762.3
Savings deposits	40,047.7	41,800.0	42,052.9	42,233.3	43,382.8
Fixed deposits	93,681.6	94,530.9	96,446.8	97,725.3	98,802.1
Others	2,846.8	2,850.9	2,846.1	2,860.9	2,905.2
Total	164,920.3	166,642.4	168,779.2	171,528.2	173,852.4
Grand Total	186,095.3	188,070.7	190,428.9	193,399.8	195,495.6

* Deposits in foreign currency include deposits of Cambodian residents and non-residents

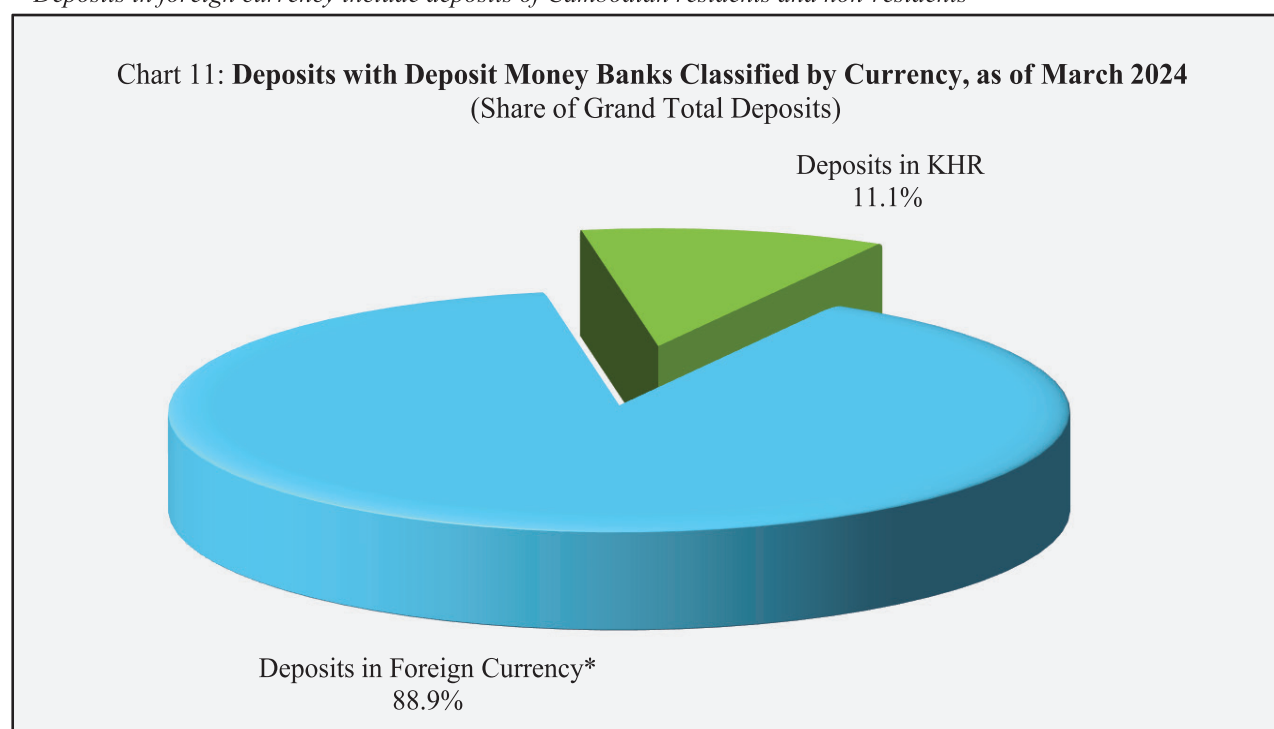


Table 19: Monthly Change of Deposits with Banks

	Nov-23	Dec-23	Jan-24	Feb-24	Mar-24
	(Change in Billion KHR)				
Deposits in KHR					
Demand deposits	-117.7	94.5	68.0	80.6	160.8
Savings deposits	-177.7	93.7	-82.5	105.2	-42.0
Fixed deposits	305.7	73.8	237.3	20.6	-338.2
Others	22.1	-8.7	-1.5	15.6	-9.0
Total	32.5	253.2	221.4	222.0	-228.4
Deposits in Foreign Currency					
Demand deposits	1,027.4	-883.5	-27.3	1,275.3	53.5
Savings deposits	619.2	1,752.3	252.9	180.4	1,149.5
Fixed deposits	250.5	849.3	1,915.9	1,278.5	1,076.8
Others	22.4	4.1	-4.8	14.7	44.3
Total	1,919.4	1,722.2	2,136.8	2,749.0	2,324.2
Grand Total	1,951.9	1,975.4	2,358.2	2,970.9	2,095.8
	(Percentage Change)				
Deposits in KHR					
Demand deposits	-2.7	2.2	1.6	1.8	3.5
Savings deposits	-4.1	2.2	-1.9	2.5	-1.0
Fixed deposits	2.5	0.6	1.9	0.2	-2.7
Others	5.6	-2.1	-0.4	3.8	-2.1
Total	0.2	1.2	1.0	1.0	-1.0
Deposits in Foreign Currency					
Demand deposits	3.8	-3.1	-0.1	4.6	0.2
Savings deposits	1.6	4.4	0.6	0.4	2.7
Fixed deposits	0.3	0.9	2.0	1.3	1.1
Others	0.8	0.1	-0.2	0.5	1.5
Total	1.2	1.0	1.3	1.6	1.4
Grand Total	1.1	1.1	1.3	1.6	1.1

Chart 12: Deposits in KHR Classified by Type, as of March 2024

(Share of Total KHR Deposits)

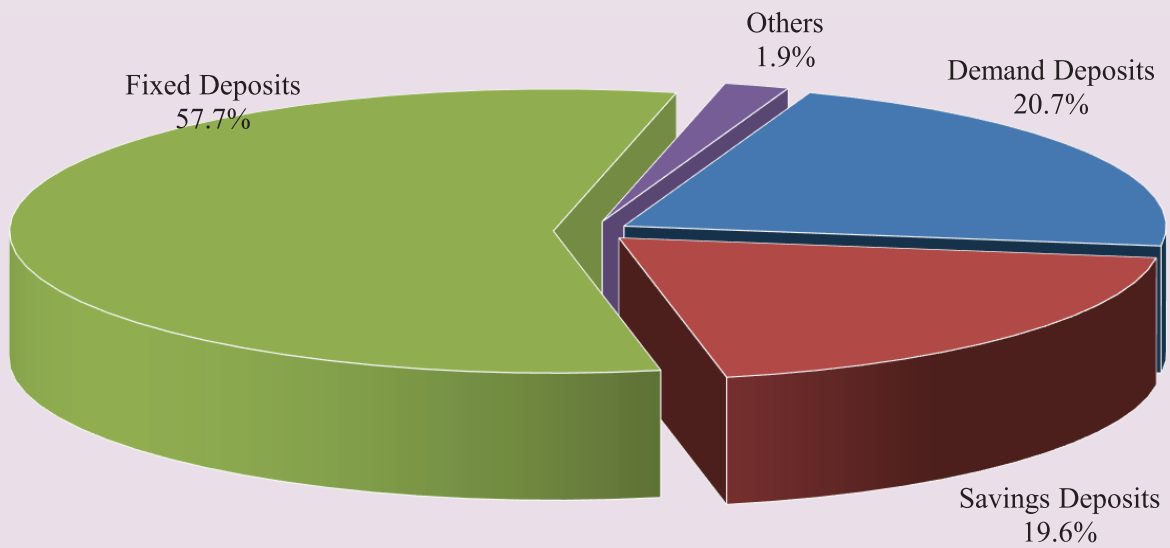


Chart 13: Deposits in Foreign Currency Classified by Type, as of March 2024

(Share of Total Foreign Currency Deposits)

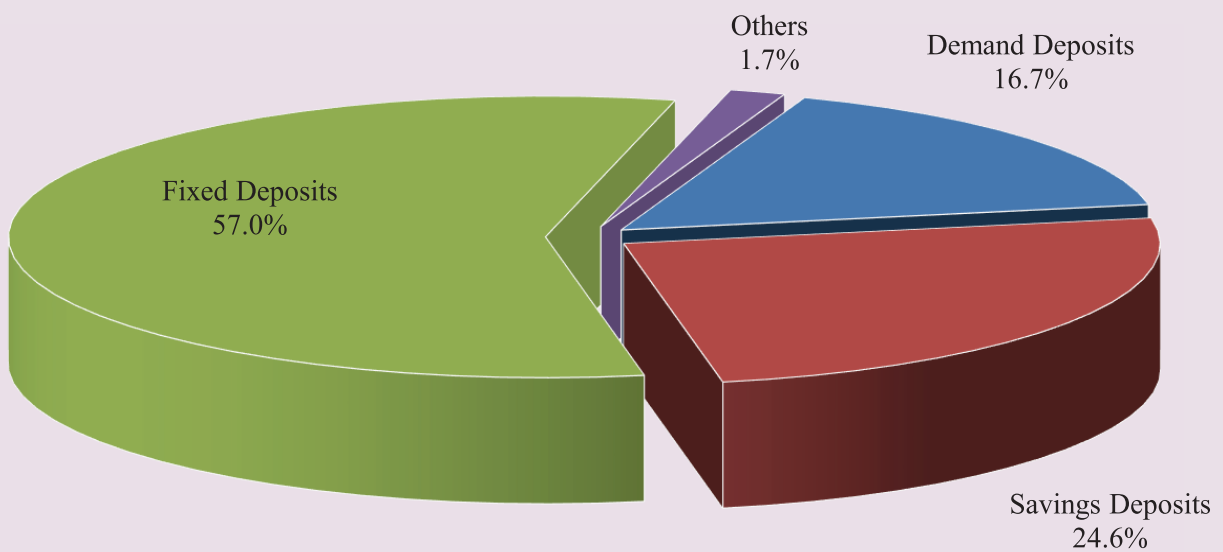


Table 20: Credit Granted by Micro-Finance Institutions*

Period	Numbers of				Loan Outstanding (In Billion KHR)	Interest Rate	
	District	Commune	Village	Household		Monthly	Annually
Dec-14	2,754	18,254	107,964	1,844,893	8,340	2% - 3%	27%-39%
Dec-15	4,576	27,510	141,514	2,149,180	12,365	2% - 4%	25%-41%
Dec-16	5,971	32,599	155,499	2,129,907	12,954	2% - 4%	25%-41%
2017*							
	Numbers of Branches			Number of Borrowers**	Loan Outstanding (In Billion KHR)	Interest Rate	
	Head Office	Province/ Krong	District/Khan			Monthly	Annually
Dec-17	76	366	975	1,776,467	17,236	1.4%-2.5%	16.9%-28.8%
Dec-18	80	399	944	1,872,916	21,813	1.2%-2.0%	15.1%-24.0%
Dec-19	82	406	965	2,109,170	29,357	1.1%-1.6%	13.4%-18.7%
Dec-20	79	343	749	1,919,926	27,527	1.1%-1.6%	13.4%-18.3%
Dec-21	77	325	664	1,897,878	31,723	1.1%-1.5%	13.3%-17.6%
2022							
May	84	334	671	1,983,181	34,976	1.1%-1.4%	13.0%-17.3%
Jun	85	336	671	2,027,069	35,730	1.1%-1.4%	12.9%-17.3%
Jul	85	337	672	2,046,509	36,477	1.1%-1.4%	13.1%-17.3%
Aug	85	339	678	2,070,163	37,189	1.1%-1.4%	13.2%-17.3%
Sep	85	340	678	2,093,002	37,725	1.1%-1.4%	13.0%-17.3%
Oct	86	340	678	2,111,552	38,374	1.1%-1.5%	13.1%-17.4%
Nov	86	340	678	2,121,312	38,761	1.1%-1.4%	13.0%-17.3%
Dec	86	343	679	2,129,150	38,932	1.1%-1.4%	13.0%-17.3%
2023							
Jan	87	342	676	2,138,432	39,335	1.1%-1.5%	13.1%-17.9%
Feb	87	342	676	2,149,437	39,255	1.0%-1.5%	12.1%-17.9%
Mar	87	346	678	2,164,707	39,684	1.0%-1.5%	12.1%-17.9%
Apr	87	346	683	2,169,008	40,068	1.0%-1.5%	12.1%-17.9%
May	87	358	674	2,179,962	40,022	1.0%-1.5%	11.6%-17.9%
Jun	87	362	672	2,185,693	40,198	1.0%-1.5%	11.5%-17.9%
Jul	87	362	671	2,188,142	40,269	0.9%-1.5%	10.2%-18.1%
Aug	87	359	652	2,163,738	40,710	0.8%-1.5%	10.2%-18.3%
Sep	86	310	517	1,625,506	21,240	1.0%-1.5%	12.2%-18.1%
Oct	87	309	518	1,627,775	21,299	1.0%-1.5%	12.1%-18.1%
Nov	87	308	517	1,626,914	21,182	1.0%-1.5%	12.1%-18.1%
Dec	87	310	515	1,620,818	21,036	1.0%-1.5%	12.1%-18.1%
2024							
Jan	87	311	516	1,619,022	21,086	1.0%-1.5%	12.1%-18.1%
Feb	87	310	514	1,617,466	21,065	1.0%-1.5%	12.1%-18.1%
Mar	87	308	513	1,614,548	20,973	1.0%-1.5%	11.9%-18.1%

* Including MFI and MDI

** Including Individuals and Legal Entities

*** Revised Data

Table 21: KHR-Denominated Checks Clearing through Clearing House

Date	Number of Cleared Check	Number of Working Day	Number of Cleared Check Per Day	Total Amount (In Billion KHR)	Daily Average Amount (In Billion KHR)	Returned Check	
						Number	Amount (In Billion KHR)
	1	2	3 = 1/2	4	5 = 4/2	6	7
Dec-16	3,938	22	179	490.0	22.3	13	3.15
Total	82,291	242	340	5,421.8	22.4	186	117.50
Dec-17	3,074	20	154	599.0	30.0	22	12.48
Total	37,485	239	1,885	6,607.8	27.6	138	28.51
Dec-18	2,994	19	158	935.1	49.2	16	6.58
Total	38,249	232	165	9,424.1	40.6	197	152.90
Dec-19	3,734	21	178	1,584.1	75.4	18	11.33
Total	41,696	236	177	13,602.7	57.6	206	630.84
Dec-20	3,264	23	142	1,839.6	80.0	5	0.57
Total	35,570	240	148	22,955.3	95.6	101	5,074.92
Dec-21	3,028	23	132	1,763.0	76.7	14	26.86
Total	31,749	242	131	19,089.4	78.9	99	466.43
2022							
May	2,908	21	138	1,605.0	76.4	5	59.83
Jun	2,813	22	128	1,770.1	80.5	6	0.39
Jul	2,726	21	130	1,448.2	69.0	5	0.30
Aug	2,996	23	130	1,758.5	76.5	3	0.13
Sep	2,654	21	126	1,421.7	67.7	6	12.03
Oct	2,771	21	132	1,776.9	84.6	7	1.48
Nov	2,721	19	143	1,791.4	94.3	2	0.03
Dec	3,106	22	141	1,898.0	86.3	8	1.79
Total	33,608	251	134	19,831.3	79.0	68	88.91
2023							
Jan	2,683	22	122	1,693.0	77.0	6	22.70
Feb	2,775	20	139	1,780.5	89.0	5	0.50
Mar	3,141	22	143	2,588.0	117.6	20	16.40
Apr	2,680	19	141	1,785.5	94.0	7	0.40
May	2,832	20	142	1,749.9	87.5	16	11.80
Jun	2,991	22	136	1,880.9	85.5	6	0.10
Jul	2,578	20	129	1,421.8	71.1	9	10.36
Aug	3,112	23	135	1,791.1	77.9	14	1.90
Sep	2,793	21	133	1,730.6	82.4	9	1.55
Oct	2,792	21	133	1,682.6	80.1	22	9.83
Nov	2,553	19	134	1,665.6	87.7	26	1.80
Dec	3,179	21	151	2,233.3	106.3	14	56.82
Total	34,109	250	136	22,002.8	88.0	154	134.16
2024							
Jan	2,706	22	123	1,867.4	84.9	6	5.83
Feb	2,859	21	136	1,410.9	67.2	8	3.51
Mar	2,822	20	144	2,019.4	101.0	8	1.60
Total	8,387	63	133	5,297.7	84.1	22	10.94

Table 22: USD-Denominated Checks Clearing through Clearing House

Date	Number of Checks Cleared	Number of days Cleared	Number of Cleared Check per Day	Total Amount (In Million USD)	Daily Average Amount (In Million USD)	Returned Checks	
						Number	Amount
						6	7 (In Million USD)
	1	2	3 = 1/2	4	5 = 4/2	6	7
Dec-16	92,820	22	4,219	2,220.4	100.9	778	44.8
Total	1,025,209	242	4,236	21,790.4	90.0	8,738	439.6
Dec-17	101,093	20	5,055	2,824.6	141.2	789	37.6
Total	1,107,752	239	4,635	26,812.7	112.2	8,863	440.4
Dec-18	111,978	19	5,894	3,917.1	206.2	904	63.6
Total	1,238,232	232	5,337	41,462.7	178.7	10,474	2,686.1
Dec-19	121,353	21	5,779	4,448.5	211.8	964	87.1
Total	1,337,800	236	5,669	51,609.1	218.7	10,654	3,779.9
Dec-20	111,749	23	4,859	4,369.7	190.0	714	45.0
Total	1,200,110	240	5,000	50,220.0	209.3	8,620	8,737.8
Dec-21	104,666	23	4,551	5,002.1	217.5	672	65.5
Total	1,077,104	242	4,451	46,380.6	191.7	8,423	517.9
2022							
May	97,990	21	4,666	4,805.0	228.8	690	56.4
Jun	95,250	22	4,330	4,763.2	216.5	678	92.0
Jul	92,323	21	4,396	4,874.0	232.1	643	47.6
Aug	100,482	23	4,369	4,507.6	196.0	771	64.5
Sep	87,331	21	4,159	4,301.1	204.8	705	73.3
Oct	89,781	21	4,275	5,054.4	240.7	779	1,076.3
Nov	86,441	19	4,550	3,771.7	198.5	864	71.5
Dec	97,561	22	4,435	4,152.9	188.8	948	78.7
Total	1,105,712	251	4,405	53,853.9	214.6	8,739	1,764.0
2023							
Jan	85,292	22	3,877	3,749.7	170.4	886	103.8
Feb	81,623	20	4,081	3,644.1	182.2	941	83.9
Mar	97,101	22	4,414	4,207.1	191.2	1,045	79.3
Apr	78,164	19	4,114	3,471.0	182.7	861	66.2
May	94,501	20	4,725	3,836.8	191.8	1,054	86.9
Jun	89,627	22	4,074	3,911.5	177.8	958	78.2
Jul	84,307	20	4,215	3,600.8	180.0	1,018	62.8
Aug	91,909	23	3,996	3,755.6	163.3	1,059	74.0
Sep	83,733	21	3,987	3,399.1	161.9	963	52.6
Oct	84,135	21	4,006	3,327.6	158.5	920	55.9
Nov	80,278	19	4,225	3,245.3	170.8	935	78.6
Dec	91,040	21	4,335	4,284.5	204.0	957	58.5
Total	1,041,710	250	4,167	44,433.1	177.7	11,597	880.6
2024							
Jan	89,845	22	4,084	3,929.3	178.6	907	205.6
Feb	79,161	21	3,770	3,504.7	166.9	865	49.7
Mar	83,061	20	4,153	3,939.2	197.0	795	60.1
Total	252,067	43	5,862	11,373.2	264.5	2,567	315.4

Table 23: Visitor Arrivals in Cambodia

	2024			% of Total		% Change	
	Jan	Feb	Mar	Feb	Mar	Feb/Jan	Mar/Feb
(Mode of Arrival)							
Phnom Penh International Airport	132,982	142,267	156,015	31.7	26.3	7.0	9.7
Kong Keng International Airport	1,170	1,480	1,011	0.3	0.2	26.5	-31.7
Siem Reap International Airport	72,354	69,589	64,845	15.5	10.9	-3.8	-6.8
Land	323,596	222,068	362,488	49.5	61.0	-31.4	63.2
Boat	9,921	13,147	9,744	2.9	1.6	32.5	-25.9
Preah Vihea	0	0	0	0.0	0.0	0.0	0.0
Total	540,023	448,551	594,103	100.0	100.0	-16.9	32.4
(Arrival by Purpose of Visit)							
Tourist	441,721	337,478	453,656	75.2	76.4	-23.6	34.4
Business and Professional	83,809	101,276	129,538	22.6	21.8	20.8	27.9
Others and not specified	14,493	9,797	10,909	2.2	1.8	-32.4	11.4
Total	540,023	448,551	594,103	100.0	100.0	-16.9	32.4
(Top-Ten Countries of Passenger Arrivals)							
Thailand	163,661	83,869	172,251	18.7	29.0	-48.8	105.4
Vietnam	85,700	99,685	114,006	22.2	19.2	16.3	14.4
China (PRC)	46,781	63,209	79,971	14.1	13.5	35.1	26.5
Lao PDR	36,153	18,393	35,625	4.1	6.0	-49.1	93.7
United States of America	24,372	21,002	21,378	4.7	3.6	-13.8	1.8
Indonesia	13,273	10,036	14,605	2.2	2.5	-24.4	45.5
United Kingdom	12,281	11,914	14,363	2.7	2.4	-3.0	20.6
South Korea	29,429	23,047	14,022	5.1	2.4	-21.7	-39.2
France	14,907	14,911	13,843	3.3	2.3	0.0	-7.2
Japan	9,589	10,279	12,280	2.3	2.1	7.2	19.5
Others	103,877	92,206	101,759	20.6	17.1	-11.2	10.4
Total	540,023	448,551	594,103	100.0	100.0	-16.9	32.4

Source: Ministry of Tourism

** Increased in times, not in percentage (%).*

Table 24: Cambodia's Imports and Exports

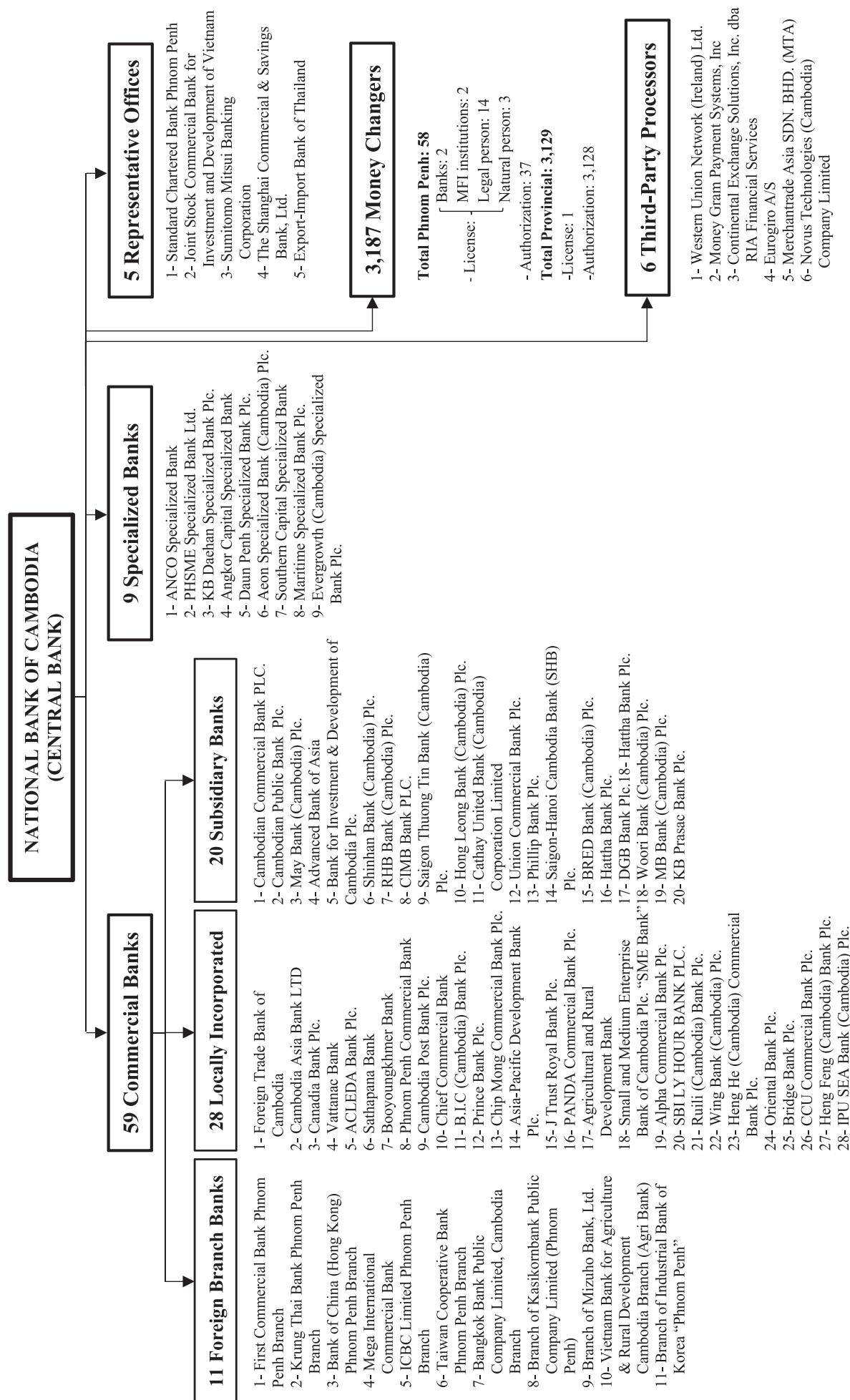
(In Billion KHR)

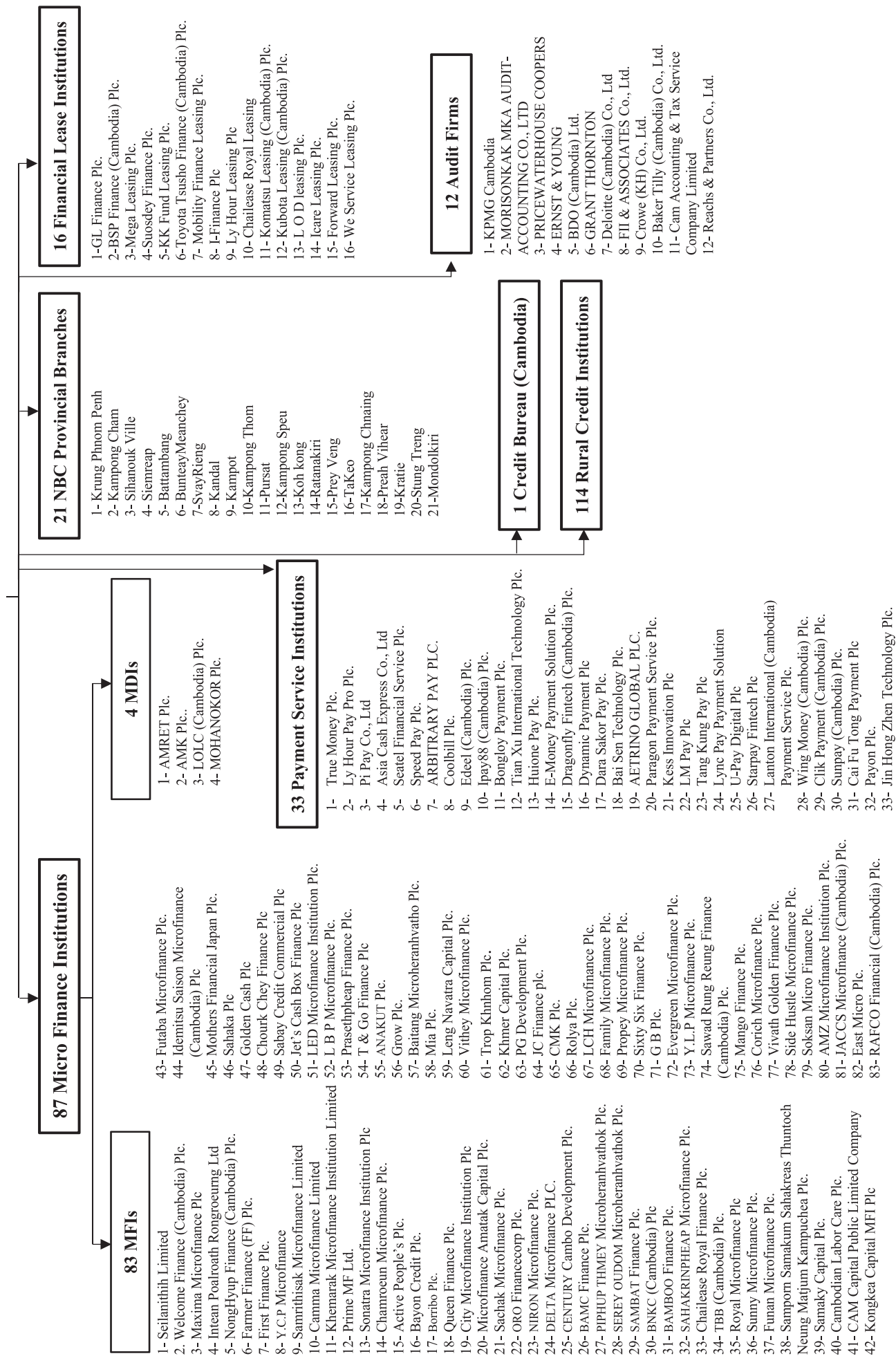
	2024			Change in Billion KHR		Change in %	
	Jan	Feb	Mar	Feb/Jan	Mar/Feb	Feb/Jan	Mar/Feb
Imports by Commodity							
Medicine	88.0	75.7	85.9	-12.2	10.2	-13.9	13.4
Cigarette	59.5	61.8	72.0	2.3	10.1	3.8	16.4
Food and Beverage	384.3	397.7	438.5	13.4	40.7	3.5	10.2
Equipment Construction	352.8	322.6	307.9	-30.1	-14.8	-8.5	-4.6
Cement	7.8	7.2	6.7	-0.6	-0.5	-7.4	-7.4
Steel	185.9	167.7	153.4	-18.2	-14.2	-9.8	-8.5
Phones	15.9	12.0	12.0	-3.9	0.0	-24.6	-0.3
T.V	2.3	1.8	4.0	-0.4	2.1	-18.5	116.1
Other Electronic Equipment	86.1	77.4	109.8	-8.7	32.4	-10.2	41.9
Garment	225.4	165.3	198.7	-60.1	33.4	-26.7	20.2
Fabric	1,628.6	1,504.2	1,462.6	-124.5	-41.6	-7.6	-2.8
Vehicle	287.2	531.5	507.5	244.3	-24.0	85.1	-4.5
Equipment of Cold	44.1	18.4	23.0	-25.7	4.6	-58.3	24.9
Gold	353.8	222.9	53.7	-130.8	-169.3	-37.0	-75.9
Oil	1,194.7	1,330.1	1,165.5	135.4	-164.6	11.3	-12.4
Fertilizer	102.5	57.2	57.5	-45.3	0.3	-44.2	0.5
Others	3,879.9	3,616.5	3,909.1	-263.4	292.6	-6.8	8.1
Total Imports	8,898.8	8,570.1	8,567.5	-328.6	-2.7	-3.7	0.0
Exports by Commodity							
Garment	2,876.7	2,712.9	2,757.2	-163.8	44.2	-5.7	1.6
Footwear	499.4	419.2	491.2	-80.2	72.0	-16.1	17.2
Other Textile Product	627.1	710.7	868.3	83.6	157.6	13.3	22.2
Electrical Part	399.9	694.3	439.3	294.4	-255.0	73.6	-36.7
Vehicle and Bicycle Part	90.7	89.4	91.8	-1.3	2.4	-1.5	2.7
Bicycle	118.0	124.8	151.5	6.9	26.7	5.8	21.4
Wood Products	168.5	143.6	174.8	-24.9	31.2	-14.8	21.7
Rice	133.2	134.0	278.1	0.8	144.0	0.6	107.5
Rubber	265.2	149.3	105.8	-115.9	-43.4	-43.7	-29.1
Fish and Other Agricultural Products	1,489.5	1,872.5	2,412.7	383.0	540.2	25.7	28.8
Others	1,434.7	1,274.2	1,511.1	-160.5	236.8	-11.2	18.6
Total Exports	8,102.8	8,324.9	9,281.7	222.1	956.8	2.7	11.5

*Source: General Department of Cambodia Customs and Excise*** Increased in times, not in percentage (%).**** Revised Data*

Table 25: THE BANKING SYSTEM IN CAMBODIA

As of 31 March 2024





អ៊ីនធឺណែត

INTERNET

: www.nbc.gov.kh គឺជាគេហទំព័ររបស់ធនាគារជាតិនៃកម្ពុជា។ ទិន្នន័យថ្មីៗក្នុងគេហទំព័រ និង ទិន្នន័យបន្តបន្ទាប់ទៀត ត្រូវបាននិងកំពុងដាក់បញ្ចូលទៅក្នុងប្រព័ន្ធទិន្នន័យ តាមធនធានដែលមាន។ លើសពីនេះទៀត គេហទំព័រនេះ គឺជាទីតាំងដ៏ល្អបំផុតដើម្បីទទួលបានទិន្នន័យសង្ខេបនៃការចេញផ្សាយចុងក្រោយបង្អស់។

www.nbc.gov.kh is the National Bank of Cambodia website. The website new data and metadata are progressively being added to the database, as resources permit. This website is the best place to start for access to summary data from the latest publications.

សេវាព័ត៌មាន

INFORMATION SERVICE

: បុគ្គលិករបស់នាយកដ្ឋានស្ថិតិ នៃធនាគារជាតិនៃកម្ពុជា អាចជួយចង្អុលបង្ហាញ ឬណែនាំអ្នកប្រើប្រាស់ក្នុងការស្វែងរកទិន្នន័យតាមតម្រូវការ។ ការបោះពុម្ពផ្សាយរបស់ធនាគារជាតិនៃកម្ពុជា អាចរកជាវបាន ហើយសេវាលើការជាវជាប្រចាំក៏អាចរៀបចំបានដែរ។ ចំពោះសេវាលើទិន្នន័យពិសេសផ្សេងទៀតក៏អាចរកបានផងដែរ តាមរយៈការមកជាវព្រឹត្តិបត្រដោយផ្ទាល់។

The Statistics Department staff of the National Bank of Cambodia can assist users in addressing their data requirements. The National Bank of Cambodia publications are available for sale and subscription services can be arranged. Other special data services are also available, on a user pays basis.

អាសយដ្ឋានទំនាក់ទំនង

CONTACT DETAILS

ធនាគារជាតិនៃកម្ពុជា

NATIONAL BANK OF CAMBODIA

នាយកដ្ឋានស្ថិតិ

Statistics Department

អគារលេខ ៦៩-៧០ មហាវិថីហាណូយ (លេខ១០១៩) ភូមិបាយ៉ាប សង្កាត់ភ្នំពេញថ្មី

ខណ្ឌសែនសុខ រាជធានីភ្នំពេញ

#69-70, Hanoi Blvd. (1019), Phum Bayab, Sangkat Phnom Penh Thmei,

Khan Sen Sok, Phnom Penh

អ៊ីម៉ែល : statistics@nbc.gov.kh

E-mail : statistics@nbc.gov.kh

ទូរស័ព្ទ : (៨៥៥) ២៣ ៧២២ ៥៦៣ – ១១១៥

Telephone : (855) 23 722 563 – 1115

ទូរសារ : (៨៥៥) ២៣ ៤២៦ ១១៧

Facsimile : (855) 23 426 117



ISSN 2074-5680

ផលិតដោយ ធនាគារជាតិនៃកម្ពុជា

Produced by the National Bank of Cambodia